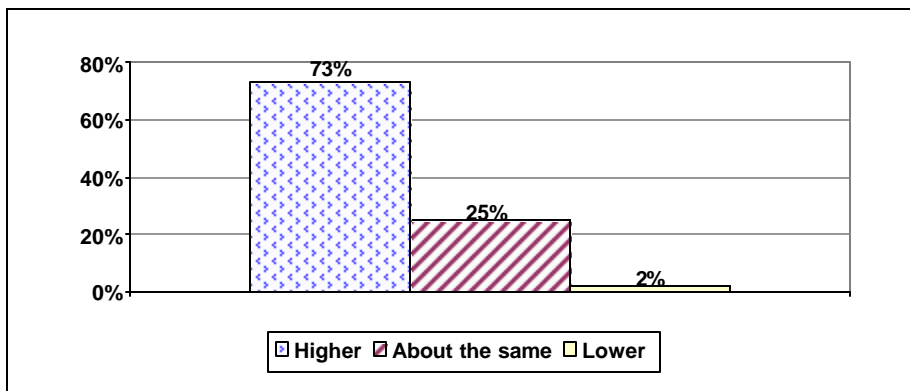
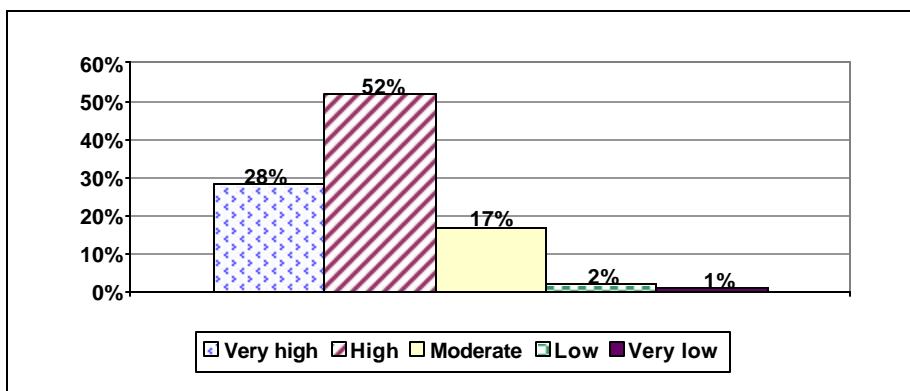


UW 20 Evaluations: Fall 2003

Graph 1. Amount of effort put into UW 20 compared to other GW courses



Graph 2. Overall level of engagement



Graph 3. Agreement with statement: This course is very challenging.

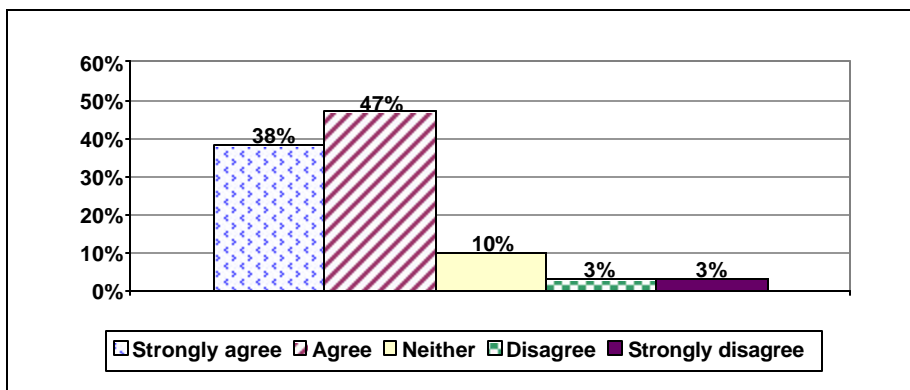


Table 1. Level of agreement with different aspects of UW 20

	Strongly agree	Agree	Neutral	Disagree	Strongly disagree
Registered for course because the content interested me	37%	40%	9%	9%	5%
By course end more interested in the subject matter than at the start	19%	37%	21%	16%	7%
Assignments were challenging and thought-provoking	33%	47%	15%	4%	2%
Comments on my work by the professor were thorough and informative	48%	38%	8%	5%	2%
The assignments were returned in time to be useful	36%	46%	11%	8%	< 1%
Instructor was accessible	48%	43%	9%	0%	< 1%
Class size contributed to course effectiveness	59%	33%	8%	1%	< 1%
Comments on my work from other students were informative/helpful	19%	44%	24%	11%	2%
Collaborating with students helped to improve my writing skills	15%	31%	36%	15%	3%
Improved capacity for analytic reading	21%	44%	23%	8%	5%
Improved capacity for analytic writing	20%	55%	13%	6%	5%
Enhanced ability to synthesize ideas from multiple sources	20%	50%	21%	5%	3%
Improved ability to construct informed, persuasive argument	20%	52%	17%	8%	3%
Comfortable asking professor for a letter of recommendation	30%	32%	24%	9%	5%
Improved research skills	29%	43%	17%	8%	4%
Research skills learned useful for other classes this semester	34%	46%	15%	3%	2%
Comfortable using GW libraries	42%	47%	9%	2%	1%
Can find subject-specific scholarly articles	41%	51%	6%	2%	0%
Librarian involved enhanced course experience	31%	28%	23%	14%	4%
Session led by librarian was helpful	26%	39%	20%	9%	6%
Individual research appointments with librarian were valuable	30%	29%	19%	17%	4%