



# College of Professional Studies

Presentation to Faculty Senate

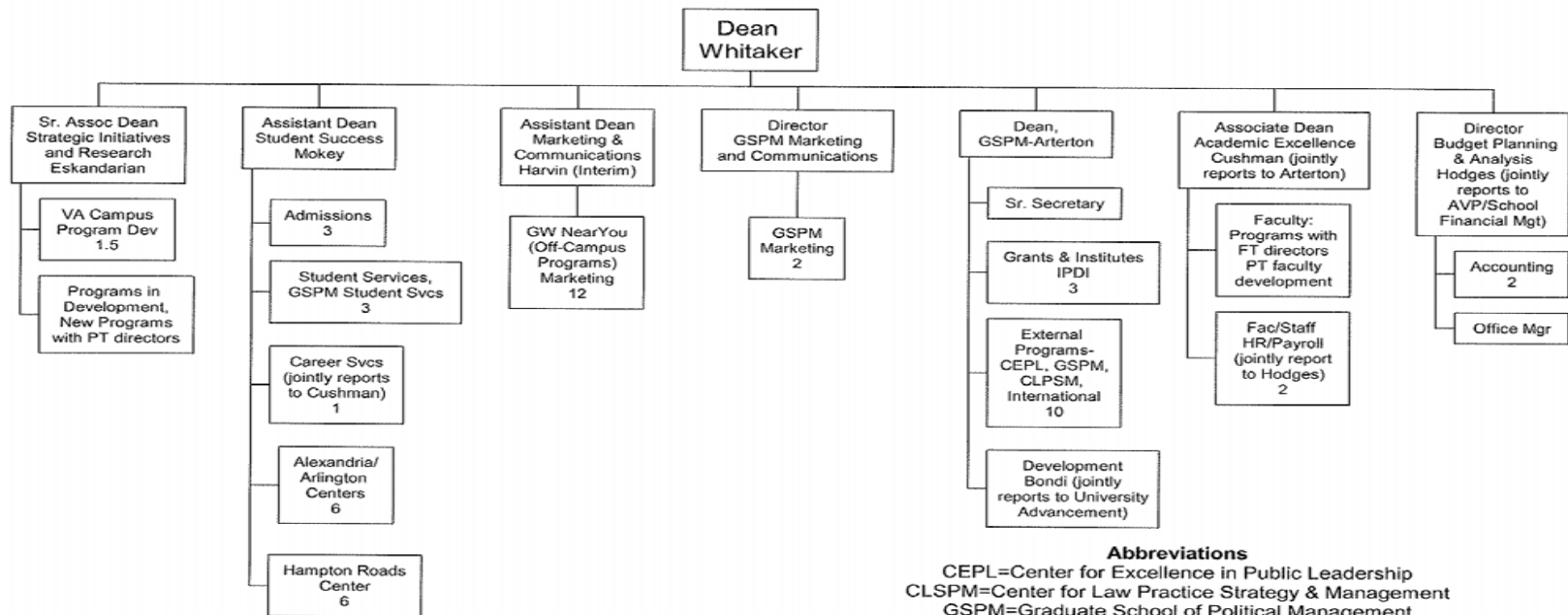
Roger Whitaker, Dean

November 9, 2007



# College of Professional Studies Organizational Chart

## College of Professional Studies October 2007



**Abbreviations**  
 CEPL=Center for Excellence in Public Leadership  
 CLSPM=Center for Law Practice Strategy & Management  
 GSPM=Graduate School of Political Management  
 IPDI=Institute for Politics, Democracy & the Internet  
**Total FTE**  
 Staff=54.5  
 Regular Faculty=14



# Off-Campus & Virginia Campus Programs

School and Program	Degree	DC		MD		VA		DL	Contract/MOU									
		K St	Hall of States Shakespeare Theatre	Pax River (SMHEC) Montgomery Co.	Anne Arundel Co.	Hampton Roads VA Beach	Richmond Alexandria AGECA	Arlington GECA VAC Ashburn	Distance	Lockheed Martin Corp.	Science Applications Int. C	Orbital Sciences	Nat. Geospatial Intel Agen	NavalSurfaceWarfareCntr	Singapore	Taiwan Air Force	College of Jewish Studies	Grants / Other
<b>School of Business (SB)</b>																		
Accelerated Master of Tourism Administration	MTA						X	X										
Accelerated MBA	MBA						X	X										
Information Systems Technology	MS IST						X	X										
Information Systems, Executive MS	MS IST							X										
Project Management	MS PM								X									
<b>Graduate School of Education and Human Development (GSEHD)</b>																		
Educational Leadership and Administration	MA Ed&HD; EdS					X	X	X	X									X
Educational Administration and Policy Studies	EdD					X		X										
Higher Education Administration	EdD					X			X									
Human & Organizational Learning	EdD								X							X		
Human Resource Development	MA Ed&HD					X	X	X								X		
Leadership Development	Grad Certificate					X	X											
Professional Teaching Standards	Grad Certificate			X	X													
School Counseling	MA Ed&HD							X										
Secondary Education - Preparation for Initial Teaching Licensure	MEd			X				X	X									
Grant, contract and MOU programs																		X



# Off-Campus & Virginia Campus Programs

School and Program	Degree	DC	MD	VA	DL	Contract/MOU														
		K St Hall of States Shakespeare Theatre DC	Pax River (SMHEC) Montgomery Co. Anne Arundel Co.	Hampton Roads VA Beach Richmond Alexandria AGEC Arlington GECA VAC Ashburn	Distance	Lockheed Martin Corp. Science Applications Int. C Orbital Sciences Nat. Geospatial Intel Agency Naval Surface Warfare Cntr Singapore Taiwan Air Force College of Jewish Studies Grants / Other														
<b>School of Engineering and Applied Science (SEAS)</b>																				
Aviation Safety & Security	Certificate				X															
Computer Science	MS				X															
Computer Security & Information Assurance	Grad Certificate				X															
Electrical & Computer Engineering	MS; DSc				X															
Engineering and Technology Management	Grad Certificate					X	X							X						
Engineering Management	MS					X	X											X		
Homeland Security Emergency Prep. Response	Grad Certificate							X												
IT for Justice & Public Safety	Grad Certificate							X												
Systems Engineering	DSc		X					X	X											
Systems Engineering	MS							X		X	X	X	X	X				X		
Systems Engineering	Grad Certificate									X	X	X	X	X						
Telecommunications and Computers	MS							X												
Telecommunications Networks	Grad Certificate							X												
Wireless and Mobile Networks	Grad Certificate							X												



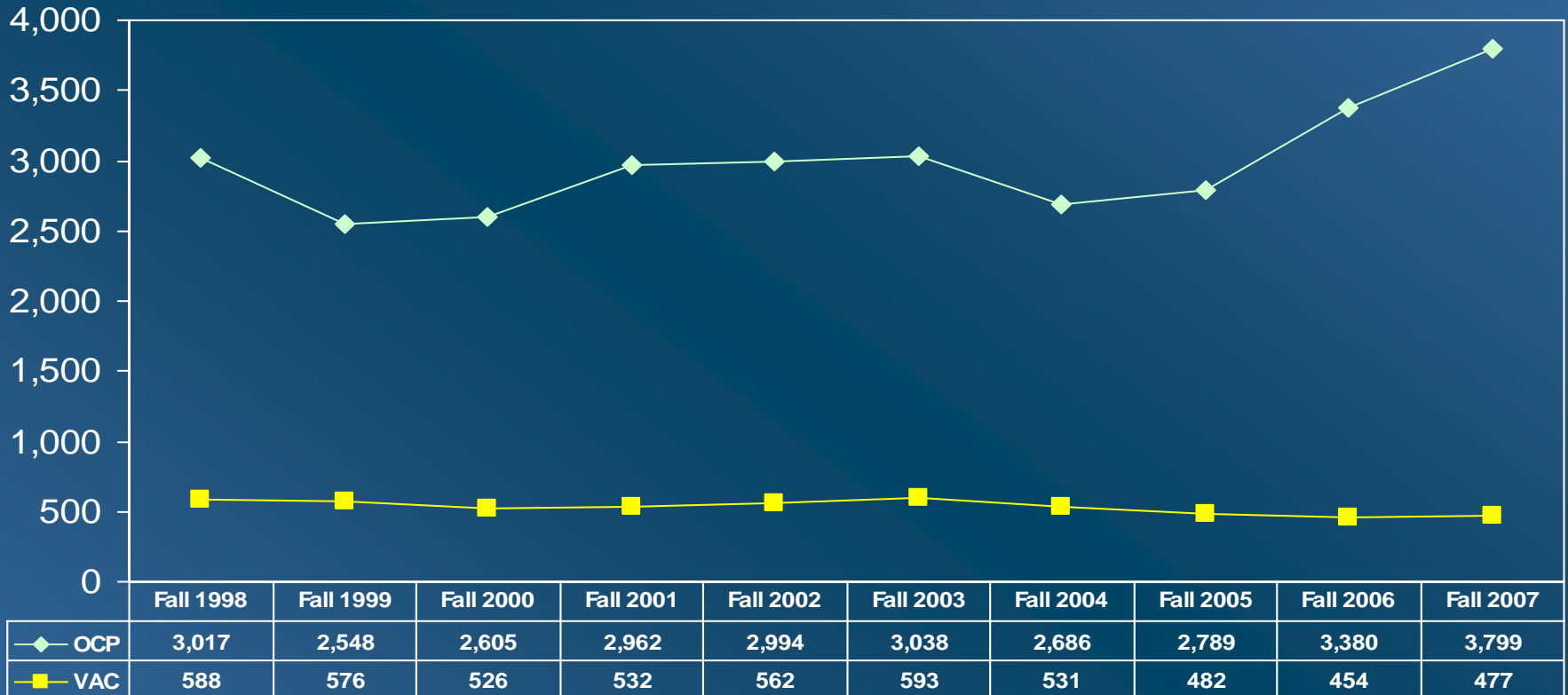
# Off-Campus & Virginia Campus Programs

School and Program	Degree	DC		MD		VA		DL		Contract/MOU															
		K St	Hall of States	Shakespeare Theatre	DC	Pax River (SMHEC)	Montgomery Co.	Anne Arundel Co.	Hampton Roads	VA Beach	Richmond	Alexandria AGECE	Arlington GECA	VAC Ashburn	Distance	Lockheed Martin Corp.	Science Applications Int. C	Orbital Sciences	Nat. Geospatial Intel Agency	Naval Surface Warfare Cntr	Singapore	Taiwan Air Force	College of Jewish Studies	Grants / Other	
<b>College of Professional Studies (CPS) includes on campus in blue fill</b>																									
Healthcare Corporate Compliance	Grad Certificate								X																
Landscape Design	Grad Certificate, MPS	X							X	X															
Law Firm Management	Grad Certificate, MPS								X						X										
Legislative Affairs	MPS		X																						
Middle-Grades Mathematics - partnership with AAAS	MPS			X																					X
Middle-Grades Science - partnership with AAAS	MPS			X																					X
Molecular Biotechnology	MPS			X																					
PACs and Political Management	Grad, Certificate			X																					
Paralegal Studies	Grad Certificate, MPS	X														X									
Police Science	Undergrad Certs; BPS			X																					
Political Management	MPS			X												X									
Publishing	MPS									X															
Strategic Public Relations	MPS			X												X									
Sustainable Landscapes	Grad Certificate									X					X										
<b>Columbian College of Arts and Sciences (CCAS)</b>																									
Classical Acting	MFA		X																						
Forensic Sciences	MFS									X															
Concentrations in High Tech Crime Investig, Security Management																									
Human Resources Management	MA									X															
Leadership Coaching	Grad Certificate									X															
Museum Collection Management & Care	Grad Certificate														X										
Organizational Management	MA									X															
Survey Design & Data Analysis	Grad Certificate									X															



# Off-Campus and Virginia Campus

## Fall Semester Ten-Year Headcount



**Notes:** Data Exclude SMHS for Off-Campus  
 End of term for all years except '07 census (sixth week of classes)



# Off-Campus Financial Results FY 07

	FY 07 Final	
	Credit Hours	Tuition Revenue (\$ in Millions)
CCAS	4,297	2.4
CPS	5,583	3.2
GWSB	12,518	11.7
SEAS	13,826	10.6
GSEHD	19,313	9.8
<b>TOTAL</b>	<b>55,537</b>	<b>37.7</b>
Reflects end of term enrollment reported by the Office of Institutional Research for the Summer 2006, Fall 2006, and Spring 2007 terms.		



# Off-Campus Enrollment

Fall 07 vs Fall 06

Headcount by School

	Enrollment			
	Fall	Fall	Change	
	2007	2006	#	%
CCAS	257	247	10	4%
GSEHD	1,019	892	127	14%
SEAS	1,065	869	196	23%
SB	642	624	18	3%
ESIA	12	7	5	71%
CPS	416	326	90	28%
Non-Degree	292	338	-46	-14%
Total	3,703	3,303	400	12%

Note: Data as of census (sixth week of classes)



# Virginia Campus Enrollment

Fall 07 vs Fall 06

Headcount by School

CCAS	2	-	2	
GSEHD	158	157	1	0.6%
SEAS	120	102	18	17.6%
SB	135	136	-1	-0.7%
ESIA	-	3	-3	-100%
SMHS	23	-	23	
CPS	5	-	5	
Non-Degree	36	40	-4	-10%
	479	438	41	9.4%



# College of Professional Studies

## Dean's Council Members

<b>Carson, John</b>	<b>SB</b>
<b>Cushman, Charles</b>	<b>GSPM</b>
<b>Hahn, James</b>	<b>SEAS</b>
<b>Helgert, Hermann</b>	<b>SEAS</b>
<b>Knight, Melinda</b>	<b>CCAS</b>
<b>Lord, Kristin</b>	<b>ESIA</b>
<b>Marotta, Sylvia</b>	<b>GSEHD</b>
<b>Shotel, Jay (Chair)</b>	<b>GSEHD</b>
<b>Southby, Richard</b>	<b>SPHHS</b>
<b>Squires, Gregory</b>	<b>CCAS</b>
<b>Williams, Larry</b>	<b>SB</b>
<b>Yu, Larry</b>	<b>SB</b>

# College of Professional Studies: New Programs

<b>Program</b>	<b>Lead Faculty</b>	<b>Organizational Partner</b>
Healthcare Corporate Compliance	Phyllis C. Borzi Jacqueline Leifer	SPHHS and Feldesman, Tucker & Leifer
Landscape Design	Adele Ashkar	Virginia Tech College of Architecture
Law Firm Management	Stephen R. Chitwood D. Jeffrey Lenn Jim Jones, Carl Leonard	Hildebrandt Institute
Middle-Grades Math	Daniel H. Ullman Curtis Pyke Florence Fasanelli	CCAS, GSEHD, American Assoc. Advancement of Science (AAAS)
Middle-Grades Science	William Parke Terry Hufford Ali Eskandarian	CCAS, GSEHD, American Assoc. Advancement of Science (AAAS)
Molecular Biotechnology	Mark Reeves Richard G. Donnelly Ali Eskandarian	CCAS, SB
Paralegal Studies	Toni Marsh	GW Law School
Police Science	Frederic Lemieux	Metro Area Police Sociology Dept.
Publishing	Arnold Grossblatt George Bozzini	World Bank
Strategic Public Relations	Donald Bates	
Sustainable Landscapes	Marion Clark	



# College of Professional Studies

## Program Development

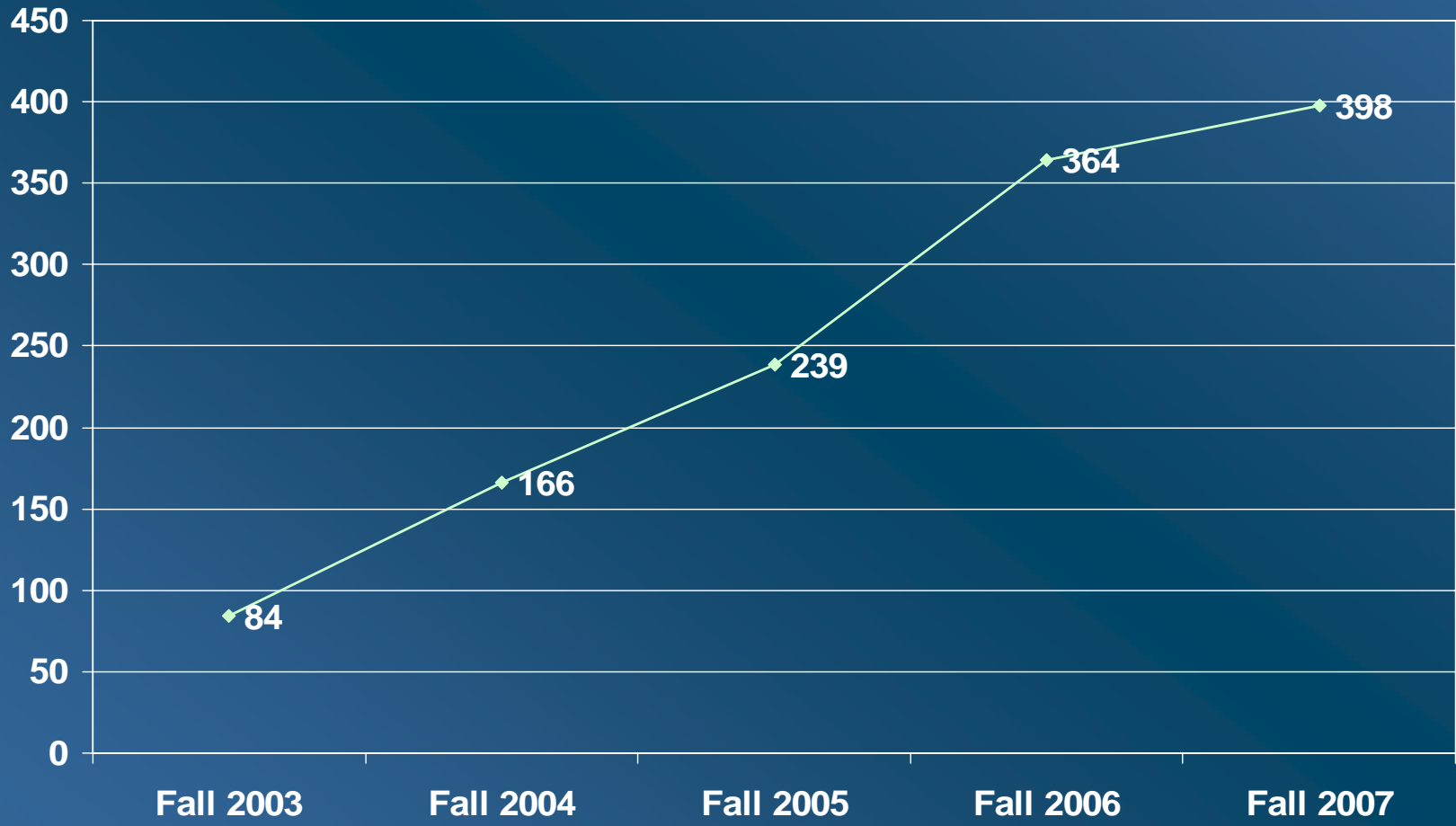
	Fall 2003	Fall 2004	Fall 2005	Fall 2006	Fall 2007**
Landscape Design	84	131	132	156	143
Police Science		35	52	51	43
Middle-Grades Math (SP05)			34	33	30
Law Firm Management (SU05)			8	15	
Healthcare Corporate Compliance			13	28	23
Middle-Grades Science (SP06)				28	27
Legislative Affairs*				48	54
Pacs and Political Management*				18	17
Political Management*				198	174
Publishing				53	82
Paralegal Studies					42
Molecular Biotechnology					8
Sustainable Landscapes					10
Strategic Public Relations					15
<b>Total</b>	<b>84</b>	<b>166</b>	<b>239</b>	<b>628</b>	<b>643</b>
* Transferred from CCAS to CPS Spring 2006					
** Census Data, Fall EOT will show additional new students					



# College of Professional Studies

## New Programs Enrollment (Headcount)

### Fall 2003 – Fall 2007





# Financial Results Summary FY 07

(in thousands)

## CPS Programs

Revenues	
Main Campus	3,310
Off Campus	3,226
Other	46
<b>Total revenue</b>	<b><u>6,582</u></b>
Expenses	
Faculty Compensation	1,455
Staff/Other	988
Benefits	528
Total Compensation	2,971
Financial Aid	57
Operating Expenses	1,007
<b>Total expenses</b>	<b><u>4,035</u></b>
<b>Margin</b>	<b>2,547</b>

## Off-Campus Program Services

Expenses	
Staff Compensation	1,626
Benefits	381
Total Compensation	<u>2,007</u>
Operating Expenses	<u>1,244</u>
<b>Total Expenses</b>	<b><u>3,251</u></b>

Total off-campus revenues were approximately \$37.7 million, including \$34.5 million in schools other than CPS.

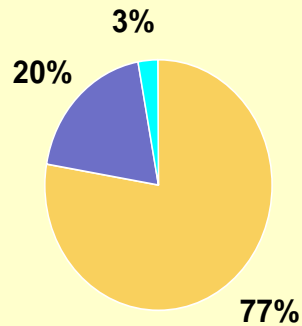


# College of Professional Studies

## Student Characteristics

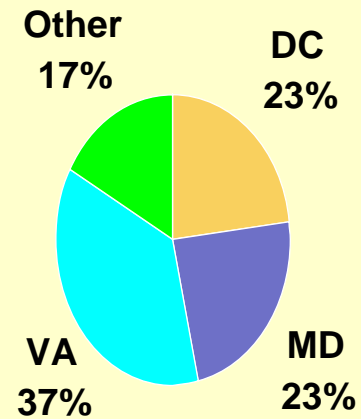
### Fall 2007

Highest Degree Earned by Master & Graduate Certificate Students  
(n=314\*)



■ Bachelor's ■ Master's ■ Doct. & JD

Residence  
(n=398)





# College of Professional Studies

## Student Characteristics

Fall 2007

(n=398\*)

### Average Age = 38

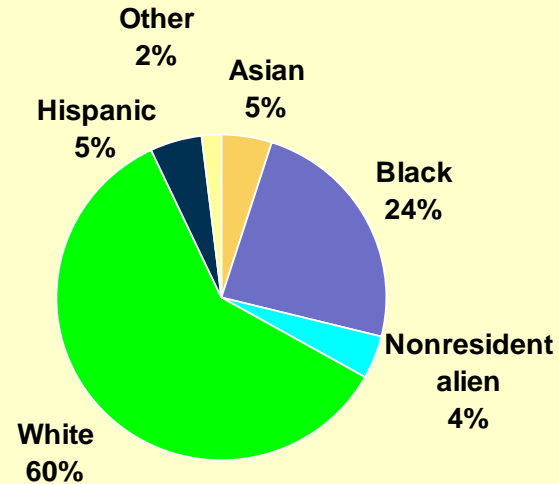
Master's	37
Graduate Certificate	37
Undergraduate Certificate	40

### Gender

Female	278	70%
Male	120	30%

### Ethnicity – Reported

n = 258







# Strategic Priorities

## CPS 2.0

- Develop New Programs
- Scale Existing Programs
- Advocate Regional Market Strategy
- Launch Adult Student Success Services
- Design Faculty Development Program
- Define Research Agenda
- Evolve CPS Organizational Culture