



THE GEORGE WASHINGTON UNIVERSITY
THE ELLIOTT SCHOOL
OF INTERNATIONAL AFFAIRS

**Elliott School of International Affairs
Graduate Student Career Development
The George Washington University**

**December 2003 -- August 2004
Graduate Employment Survey Report**

Dec 2003- Aug 2004 Graduate Employment Survey Report

	Number	Percentage		# of	% of Employed	Average
Total Graduates	241	100%	Employment by	Students		Salary Range
Responses to Survey	226	94%	Sector			
Employed	202	90%	Non-Profit	53	26%	\$37,000-\$47,000
Further Education/Retired	5	2%	Private	52	26%	\$51,000-\$60,000
Still Looking/ Other	19	8%	Public	97	48%	\$43,000-\$53,000

Sector Breakdown			Average Salary
Non-Profit Sector			
	53	100%	\$37,000-\$47,000
Development Assistance	12	23%	\$36,000-\$46,000
Foundations/Institutes	4	8%	\$28,000-\$37,000
Public Interest/Advocacy Groups	8	15%	\$33,000-\$43,000
Private Voluntary Organizations	1	2%	\$40,000-\$50,000
Research Organizations	10	19%	\$37,000-\$47,000
Trade/Professional Associations	1	2%	\$30,000-\$40,000
University/ Educational Institution	17	32%	\$42,000-\$51,000
			Average Salary Range
Private Sector			
	52	100%	\$51,000-\$60,000
Consulting	29	56%	\$50,000-\$59,000
Financial Services/ Banking	3	6%	\$40,000- \$50,000
Legal	2	4%	\$90,000-\$95,000
Media	3	6%	\$30,000-\$40,000
Medical	1	2%	\$30,000-\$40,000
Self Employed	2	4%	\$90,000-\$100,000
Temp Agency	2	4%	Not Reported
Technology	3	6%	\$67,000-\$73,000
Trade/Professional Association	7	13%	\$39,000-\$49,000
			Average Salary Range
Public Sector			
	97	100%	\$43,000-\$53,000
Foreign Government	9	9%	\$33,000-\$45,000
Multilateral Organizations	9	9%	\$46,000-\$56,000
State/Local Government	2	2%	\$20,000-\$30,000
U.S. Government	75	77%	\$45,000-\$54,000
U.S. Military	2	2%	\$40,000-\$55,000
U.S. Peace Corps	0	0%	NA

Source of Job			
(100% Response Rate of Employed)			
	# of	% of Employed	
New Job Since Graduation	117	58%	
Returning to Previous Employer	85	42%	
Total	202	100%	
Specific Source of New Job			
Co-op/ Internship	37	32%	
Elliott School Career Connection	6	5%	
Other Networking Opportunity	7	6%	
Self	1	1%	
Faculty Staff Referral	7	6%	
Commercial/Corporate Website	12	10%	
FSO Process	3	3%	
PMF	14	12%	
Employment Agency	3	3%	
Research Project	0	0%	
Temp Agency	1	1%	
On-Campus Interviews	4	3%	
Career Fair/ Opportunity Knocks	0	0%	
Conference/Event	2	2%	
Elliott School Alumni Referral	1	1%	
Print Ads	0	0%	
Other	7	6%	
No Answer	12	10%	
Totals	117	100%	

Years of Work Experience Prior to Elliott School		
	# of	% of respondents
Responses to this Question	210	100%
None	57	27%
1 to 3 Years	103	49%
4 to 6 Years	29	14%
7 to 10 Years	12	6%
11 to 15 Years	4	2%
More than 16 years	5	2%

Elliott School Graduate Student Employment Information by Degree

		% of responses	Avg Salary Range
MA	186	82%	\$42,000-\$52,000
MIPP	19	8%	\$75,000-\$80,000
MIS	1	0%	not reported
MA/MBA	6	3%	\$60,000-\$68,000
MA/MPH	1	0%	\$40,000-\$50,000
MA/JD	6	3%	\$68,000-\$75,000
Certificate Program	7	4%	\$50,000-\$58,000

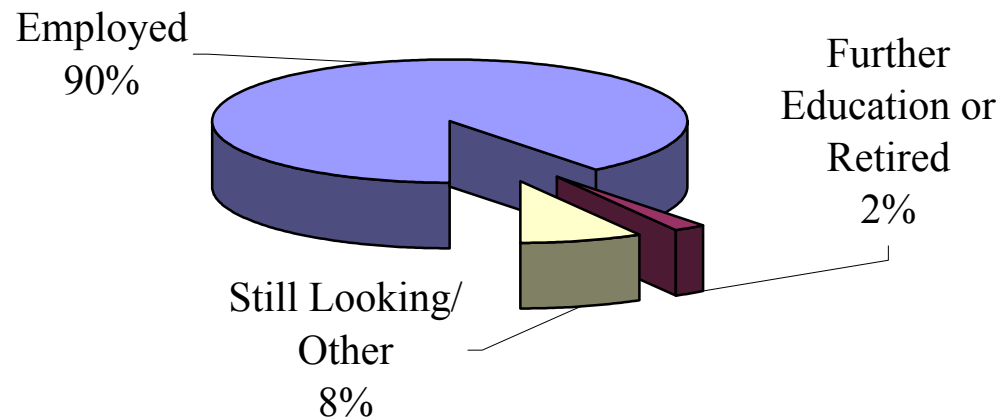
Degree Employment Data	Total	Percentage	Avg Salary Range	Degree Employment	Total	Percentage	Avg Salary Range
MA	186			MA/MPH	1		
Non-Profit	46	25%	\$35,000-\$45,000	Non-Profit	1	100%	\$40,000-\$50,000
Private	42	23%	\$43,000-\$53,000	Private	0	0%	NA
Public	78	42%	\$42,000-\$52,000	Public	0	0%	NA
Further Education	3	2%	\$0	Further Education	0	0%	NA
Still Looking	17	9%	\$0	Not Specified	0	0%	NA
				Still Looking	0	0%	NA
International Policy & Practice (MIPP)	19		Avg Salary Range	MA/JD Program	6		Avg Salary Range
Non-Profit	2	11%	\$70,000-\$75,000	Non-Profit	1	17%	\$40,000-\$50,000
Private	4	21%	\$95,000-\$100,000	Private	2	33%	\$90,000-\$95,000
Public	10	53%	\$68,000-\$74,000	Public	3	50%	\$50,000-\$60,000
Further Education	0	0%	\$0	Further Education	0	0%	NA
Retired	1	5%	\$0	Not Specified	0	0%	NA
Still Looking	2	10%	\$0	Still Looking	0	0%	NA
MA/MBA Program	6		Avg Salary Range	Degree Employment	Total	Percentage	Avg Salary Range
Non-Profit	2	33%	\$50,000-\$60,000	Certificate	7		
Private	2	33%	\$85,000-\$90,000	Non-Profit	2	29%	\$20,000-\$30,000
Public	2	33%	\$40,000-\$50,000	Private	2	29%	\$70,000-\$75,000
Further Education	0	0%	NA	Public	2	29%	\$45,000-\$55,000
Still Looking	0	0%	NA	Further Education	1	13%	NA
				Not Specified	0	0%	NA
				Still Looking	0	0%	NA

Elliott School Graduate Student Employment Information by program

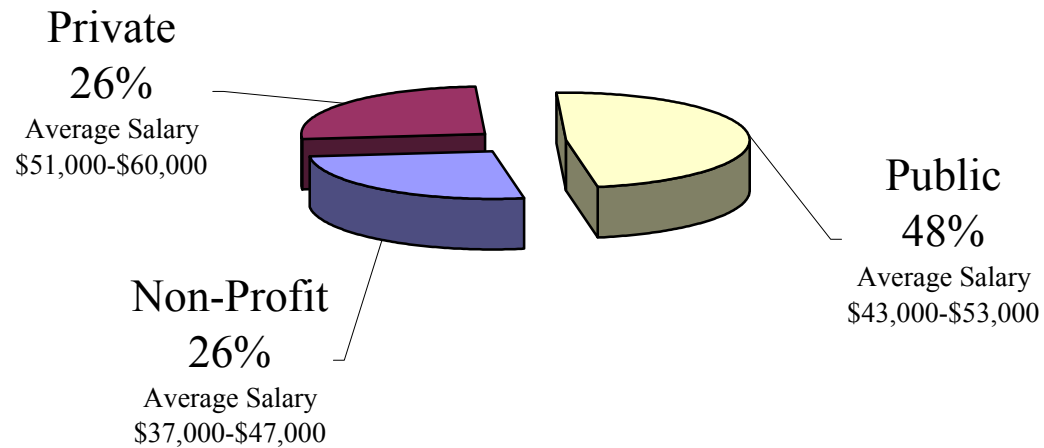
222 Survey Respondents

Program	Total	Percentage	Avg Salary Range	Program	Total	Percentage	Avg Salary Range
Asian Studies	6	3%	\$42,000-\$54,000	Int'l Trade & Investment Policy	11	5%	\$44,000-\$54,000
European & Eurasian Studies	11	5%	\$32,000-\$42,000	Latin American Studies	5	2%	\$27,000-\$37,000
International Affairs	108	48%	\$42,000-\$52,000	Science, Techology, and Public Policy	17	9%	\$42,000-\$52,000
Int'l Development Studies	21	9%	\$43,000-\$53,000	Security Policy Studies	24	12%	\$43,000-\$53,000
Int'l Policy and Practice	19	8%	\$74,000-\$80,000				
Program Employment Data	Total	Percentage	Avg Salary Range	Program Employment Data	Total	Percentage	Average Salary Range
Asian Studies	6			Int'l Development	21		
Non-Profit	1	17%	\$20,000-\$29,000	Non-Profit	12	57%	\$38,000-\$48,000
Private	1	17%	\$70,000-\$79,000	Private	3	14%	\$37,000-\$47,000
Public	3	50%	\$40,000-\$53,000	Public	4	19%	\$60,000-\$70,000
Further Education	1	17%	\$0	Further Education	1	5%	\$0
Still Looking	0	0%	\$0	Still Looking	1	5%	\$0
European & Eurasian Studies	11	Percentage	Avg Salary Range	Int'l Trade & Investment	11	Percentage	Average Salary Range
Non-Profit	5	45%	\$35,000-\$45,000	Non-Profit	1	9%	\$20,000-\$30,000
Private	2	18%	\$25,000-\$35,000	Private	3	27%	\$37,000-\$47,000
Public	4	36%	\$33,000-\$43,000	Public	6	55%	\$52,000-\$62,000
Further Education	0	0%	\$0	Further Education	0	0%	\$0
Still Looking	0	0%	\$0	Still Looking	1	9%	\$0
International Affairs	108	Percentage	Avg Salary Range	Latin American Studies	5	Percentage	Average Salary Range
Non-Profit	23	21%	\$36,000-\$46,000	Non-Profit	3	60%	\$30,000- \$40,000
Private	27	25%	\$53,000-\$62,000	Private	1	20%	not reported
Public	44	41%	\$39,000-\$49,000	Public	1	20%	\$30,000- \$40,000
Further Education	1	1%	\$0	Further Education	0	0%	\$0
Still Looking	12	12%	\$0				
Science, Technology, and Public Policy	17	Percentage	Avg Salary Range	Int'l Policy and Practice	19	Percentage	Avg Salary Range
Non-Profit	2	12%	\$40,000-\$50,000	Non-Profit	2	11%	\$70,000-\$75,000
Private	3	18%	\$50,000-\$60,000	Private	4	21%	\$95,000-\$100,000
Public	9	52%	\$39,000-\$49,000	Public	10	52%	\$68,000-\$74,000
Further Education	0	0%	\$0	Further Education	0	0%	\$0
Still Looking	3	18%	\$0	Retired	1	5%	\$0
				Still Looking	2	11%	\$0
Security Policy Studies	24	Percentage	Avg Salary Range				
Non-Profit	3	13%	\$40,000- \$50,000				
Private	6	25%	\$33,000-\$43,000				
Public	14	58%	\$47,000-\$57,000				
Further Education	0	0%	\$0				
Still Looking	1	4%	\$0				

**Elliott School of International Affairs
Graduate Student Career Employment Information
December 2003 - August 2004
Employment Status Information
(94% Reporting)**

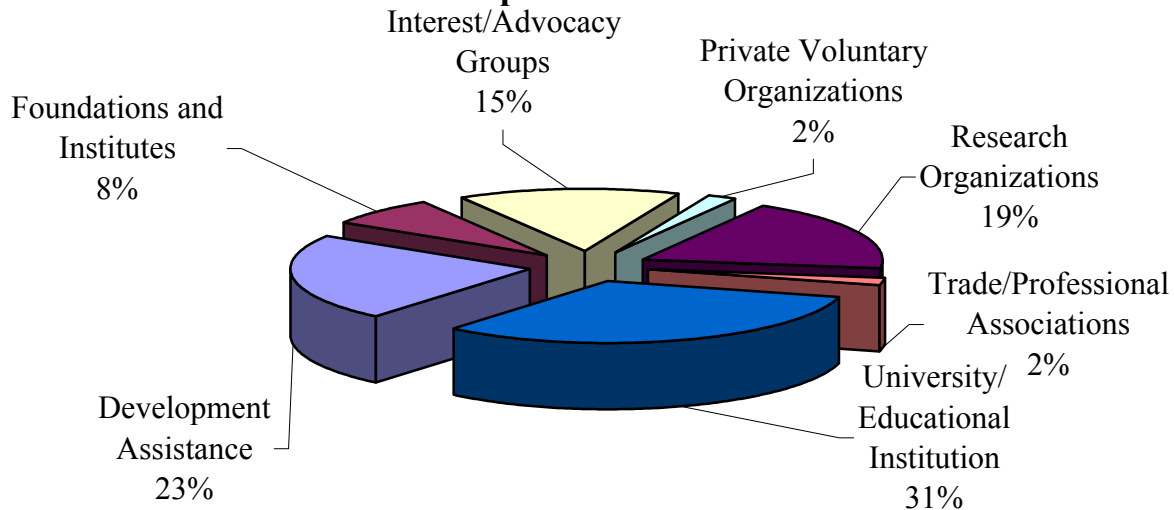


**Elliott School of International Affairs
Graduate Student Career Employment Information
December 2003 - August 2004
Employment By Sector**



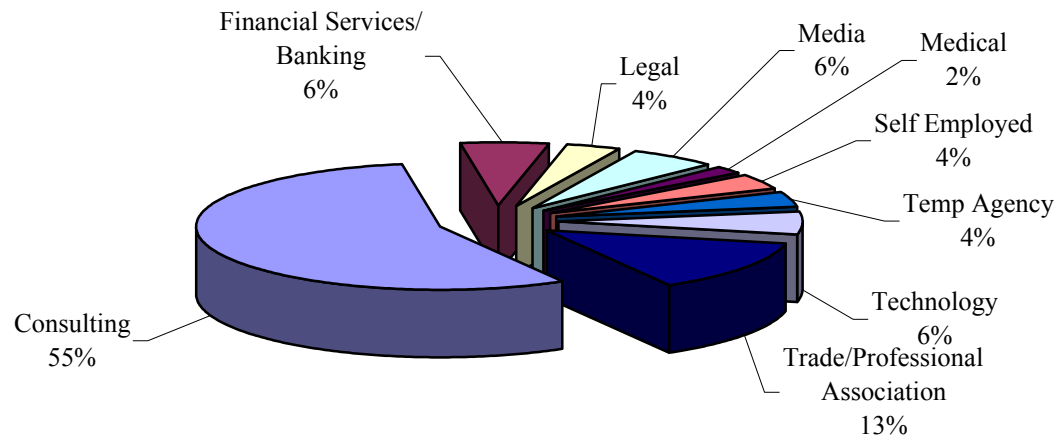
**Elliott School of International Affairs
Graduate Student Career Employment Information
December 2003 - August 2004**

Nonprofit Sector Detail

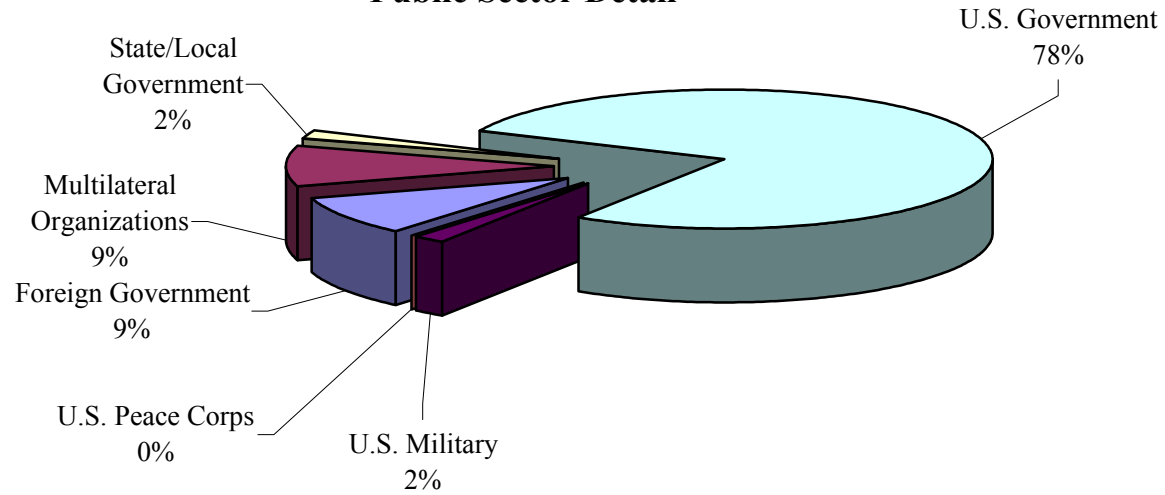


**Elliott School of International Affairs
Graduate Student Career Employment Information
December 2003 - August 2004**

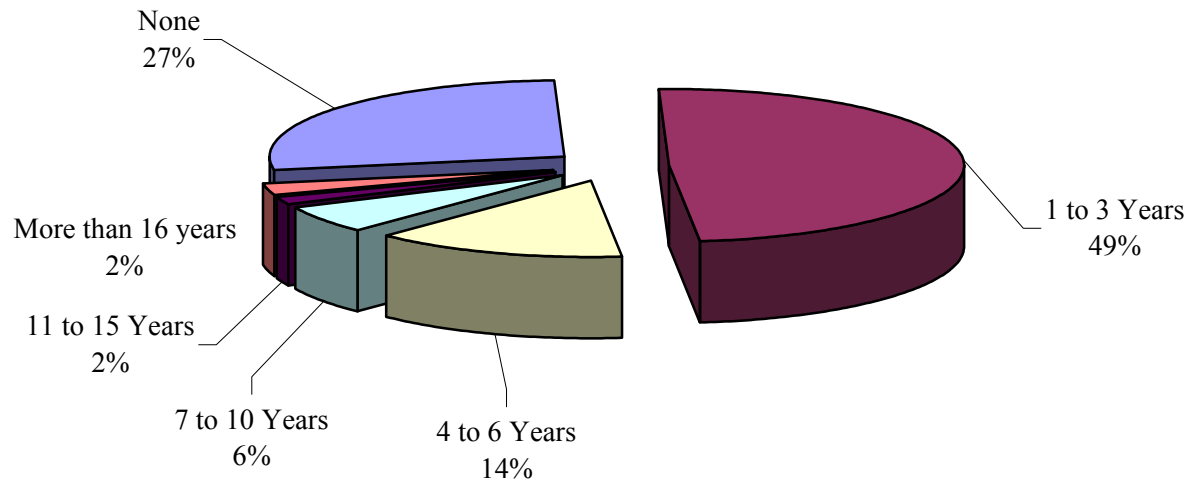
Private Sector Detail



**Elliott School of International Affairs
 Graduate Student Career Employment Information
 December 2003 - August 2004
 Public Sector Detail**



**Elliott School of International Affairs
 Graduate Student Career Employment Information
 December 2003 - August 2004
 Years of Work Experience Prior to School**

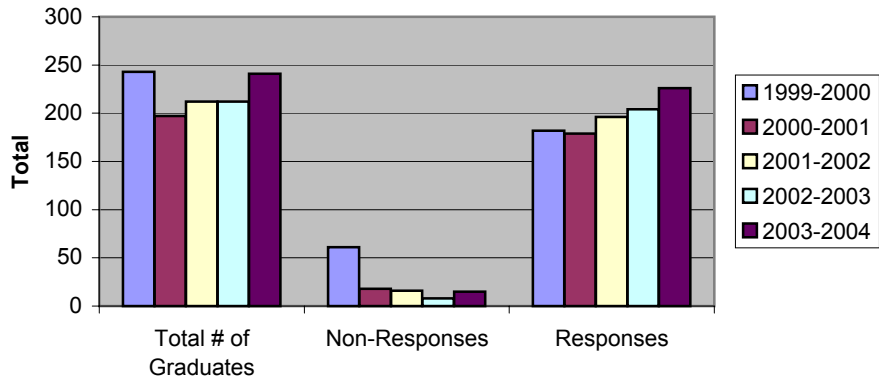


Comparative Analysis of Data over Time in Select Categories

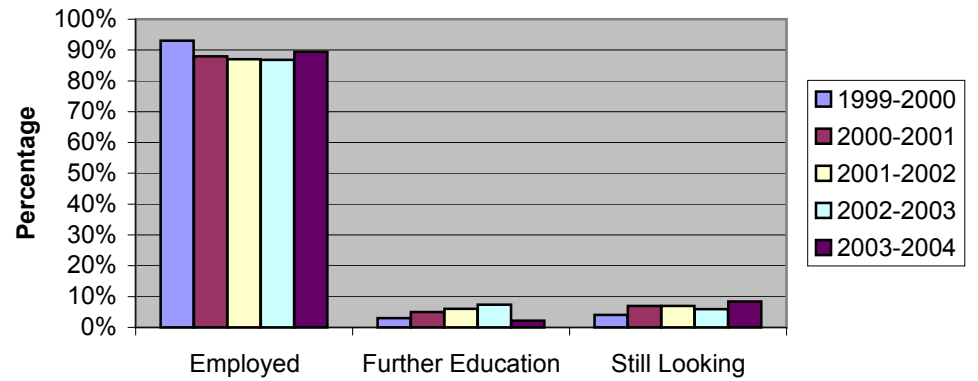
Graduation Totals	1999-2000			2000-2001			2001-2002		
	# of Grads	Percentage		# of Grads	Percentage		# of Grads	Percentage	
Total # of Graduates	243	100%		197	100%		212	100%	
Non-Responses	61	25%		18	9%		16	7%	
Responses	182	75%		179	91%		196	93%	
Employment Totals	# of Responses	Percentage		# of Responses	Percentage		# of Responses	Percentage	
Employed	170	93%		158	88%		171	87%	
Further Education	5	3%		8	5%		11	6%	
Still Looking	7	4%		13	7%		13	7%	
Employment by Sector	# of Grads	Percentage	Avg. Salary	# of Grads	Percentage	Avg. Salary	# of Grads	Percentage	Avg. Salary
Non-Profit	29	16%	\$31,400-\$40,400	41	26%	\$32,900-\$41,900	38	22%	\$31,000-\$41,000
Private	67	37%	\$46,300-\$55,300	50	32%	\$47,100-\$56,100	35	20%	\$38,000-\$48,000
Public	74	40%	\$36,700-\$45,700	67	42%	\$39,200-\$48,200	84	49%	\$40,000-\$50,000
Not Specified	0	0%	\$0	0	0%	\$0	15	9%	Unknown
Years of Experience	# of Grads	Percentage		# of Grads	Percentage		# of Grads	Percentage	
None	21	27%		61	39%		43	27%	
1 to 3 Years	31	40%		66	40%		75	48%	
4 to 6 Years	14	18%		19	11%		19	12%	
7 to 10 Years	11	14%		8	5%		11	7%	
11 to 15 Years	0	0%		7	5%		10	6%	
More than 16 years	1	1%		0	0%		0	0%	

Graduation Totals	2002-2003			2003-2004		
	# of Grads	Percentage		# of Grads	Percentage	
Total # of Graduates	212	100%		241	100%	
Non-Responses	8	4%		15	6%	
Responses	204	96%		226	94%	
Employment Totals	# of Responses	Percentage		# of Responses	Percentage	
Employed	177	87%		202	89%	
Further Education	15	7%		5	2%	
Still Looking	12	6%		19	8%	
Employment by Sector	# of Grads	Percentage	Avg. Salary	# of Grads	Percentage	Avg. Salary
Non-Profit	58	33%	\$32,000-\$42,000	53	26%	\$37,000-\$47,000
Private	45	25%	\$44,000-\$54,000	52	26%	\$51,000-\$60,000
Public	74	42%	\$38,000-\$48,000	97	48%	\$43,000-\$53,000
Not Specified	0	0%	\$0			
Years of Experience	# of Grads	Percentage		# of Grads	Percentage	
None	56	32%		57	27%	
1 to 3 Years	86	49%		103	49%	
4 to 6 Years	22	13%		29	14%	
7 to 10 Years	8	5%		12	6%	
11 to 15 Years	4	2%		4	2%	
More than 16 years	1	1%		5	2%	

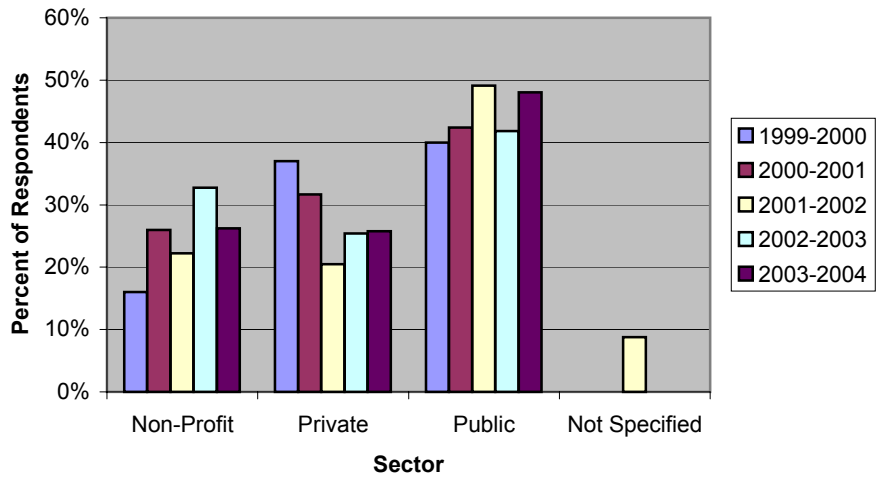
Response Rate Over time



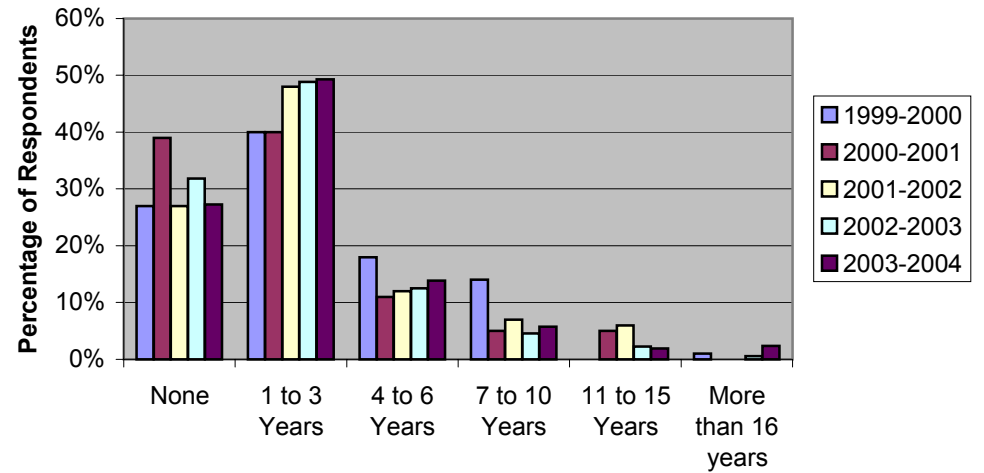
Employment Totals



Employment by Sector



Years of Experience



**Elliott School of International Affairs
Organizations Where 2003-2004 Graduates Work**

<p>Asian Studies The Cohen Group The George Washington University U.S. Army U.S. Department of Defense</p>	<p>International Affairs (Cont.) ICF Consulting iJet Travel Risk Management Institute of International Education (IIE) Intellibridge Corporation Inter-American Development Bank InterAction</p>	<p>International Affairs (Cont.) U.S. Senate United Nations Development Programme (UNDP) Washington Business Information, Inc. White & Case LLP Women for Women International</p>
<p>European & Eurasian Studies American Councils for International Education (ACT) CDS International EADS North America Eurasia Foundation GEM Technology IFES: Democracy At Large Institute for Economic Research KNG Anderson The World Bank Group U.S. Department of Energy U.S. Federal Trade Commission</p>	<p>International Child Art Foundation International Republican Institute (IRI) (2) International Resources Group (IRG) International Union of Police Associations Internews Network John Snow, Inc. Kroll Library of Congress Ministry of Foreign Affairs-Thailand National Assembly of the Republic of Korean National Conference of State Legislatures National Defense University (NDU) National Democratic Institute (NDI) National Environmental Trust National Security Agency (NSA) (2) Oak Ridge Associated Universities Office of U.S. Representative Marion Berry Office Of U.S. Senator Ted Kennedy QED Group Raytheon Science Applications International Corporation (SAIC) The Development Executive Group The George Washington University (2) The World Bank Group (3) Tokyo Shimbun Tuck School of Business, Dartmouth College U.S. Agency for International Development (USAID) U.S. Commission on International Religious Freedom U.S. Department of Agriculture U.S. Department of Commerce (3) U.S. Department of Defense (2) U.S. Department of Homeland Security (2) U.S. Department of State (8) U.S. Department of the Navy U.S. Institute of Peace (USIP)</p>	<p>International Development Studies American Councils for International Education (ACT) Chemonics International Conservation International Education Development Center, Inc. Freedom House Fujitsu Ltd. Howard University Institute of International Education (IIE) International Center on Nonviolent Conflict International Labor Rights Fund Millennium Challenge Corporation (MCC) Northeast Florida Healthcare Institute Pact Save the Children USA The World Bank Group U.S. Agency for International Development (USAID) U.S. Federal Trade Commission ZQF Partnership</p>
<p>International Affairs AARP Alliance Science and Tech Association for Conflict Resolution BearingPoint, Inc. (2) Belo Capital Bureau Booz Allen Hamilton Campaign for Tobacco Free Kids CAS, Inc Center for Strategic and International Studies (CSIS) Chemical and Biological Arms Control Institute (CBACI) Chemonics International (3) Citibank Corporate Executive Board DAC Defense Intelligence Agency (DIA) (3) DFI International Federal Bureau of Investigation (FBI) (3) Fourth Freedom Forum Global Alliance for TB Drug Development (TB Alliance) Grunfeld, Desiderio Heartlands International, Inc. Heinrich Boell Foundation</p>	<p>International Trade & Investment Policy BearingPoint, Inc. Federal Reserve Bank of New York IBT International Monetary Fund (IMF) National Chengchi University Transnational Public Policy Advisors, LLC U.S. Department of Agriculture U.S. Department of Commerce U.S. Department of State U.S. Senate Democratic Policy Committee</p>	

Science, Technology, and Public Policy

Center for Strategic and International Studies (CSIS)
 Columbia University
 Defense Intelligence Agency (DIA)
 Defense Threat Reduction Agency (DTRA)
 Energetics, Inc.
 Heitech Services
 Japanese Ministry of Education
 National Academies
 National Oceanic and Atmospheric Administration (NOAA)
 National Science Foundation (NSF)

Latin American Studies

Alexandria City Public Schools
 Lexington Institute
 RAND Corporation

Security Policy Studies

Booz Allen Hamilton
 Campaign for Barak Obama
 Center for Defense Information (CDI)
 Center for Strategic and International Studies (CSIS)

Security Policy Studies (Cont.)

Central Intelligence Agency (CIA)
 Defense Intelligence Agency (DIA)
 Federal Bureau of Investigation (FBI)
 Manhattan District Attorney's Office
 Metropolitan Associates
 National Defense University (NDU)
 National Geospatial-Intelligence Agency (NGA)
 National Institute for Public Policy
 Northrop Grumman
 Piedmont Family Practice
 Science Applications International Corporation (SAIC)
 Terrorism Research Center
 U.S. Department of Defense (2)
 U.S. Department of Energy
 U.S. Department of State (2)
 U.S. Navy
 Satellite Industry Association
 The World Bank Group
 U.S. Agency for International Development (USAID)
 U.S. Environmental Protection Agency (EPA)

Certificate of Advanced Study

Consulting and Clinical Psychology, Ltd.
 Direct Campaign Solutions
 U.S. Department of Defense
 University of Maryland

Master of International Studies (MIS)

University of Paris 1--Sorbonne

Master of International Policy and Practice (MIPP)

Brazilian Ministry of Foreign Relations
 Japan Defense Agency
 Millennium Challenge Corporation (MCC)
 Ministry of Foreign Affairs, Taiwan
 Ministry of Foreign Affairs-China
 National Defense University (NDU)
 Public Broadcasting Service (PBS)
 RSR Marketing Solutions
 The George Washington University
 U.S. Department of State (3)
 Wall Street Journal