

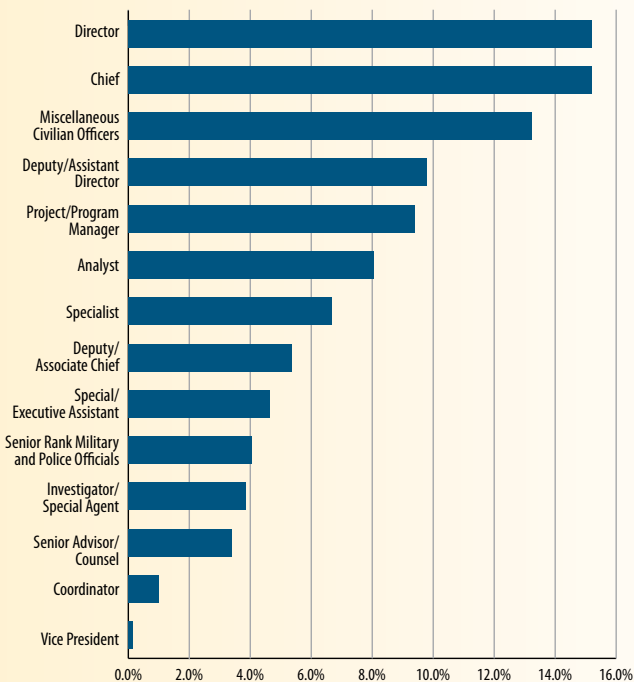
Information You Can Use

The Senior Leader Program is based on the Office of Personnel Management's Executive Core Qualifications, those qualities identified as necessary to build a federal corporate culture that drives for results, serves customers, and builds successful teams and coalitions within and outside the organization. Specific modules include:

- Effective Communication
- Negotiating and Influencing
- Leadership
- Strategic Management
- Federal Budgeting

"Although all participants were from a myriad of government agencies, we all had the same challenges, problems, and rewards. The interaction was very enlightening and I thoroughly enjoyed meeting so many of the attendees."

Our Participants Cover Many Functional Areas



Convenience That Meets Your Needs

Courses are available in both classroom and residential formats.

Classroom (Five-week Format)

Meet on Thursdays and Fridays from 8:30am–5:00 p.m. for four weeks

Classroom sessions take place at one of The George Washington University's metro-accessible locations

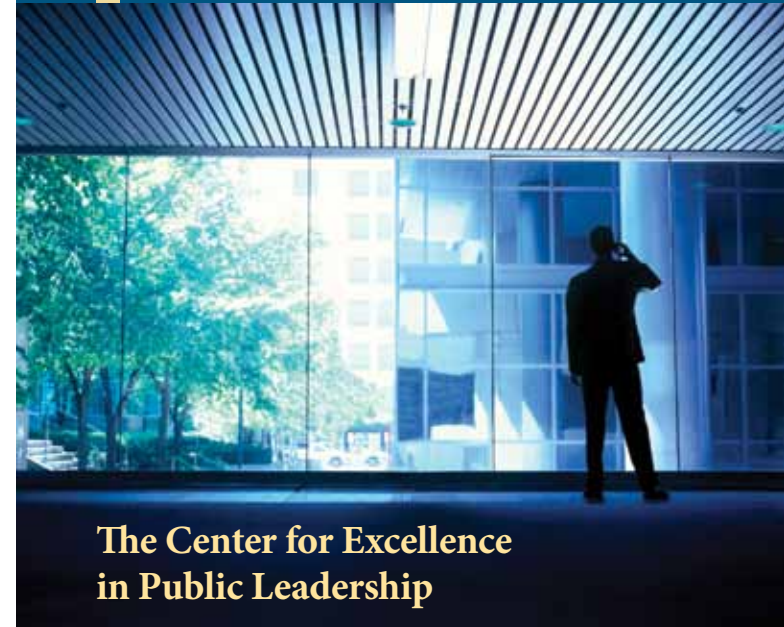
The fifth week is residential and takes place at a local executive conference center

Residential (Two-week Format)

Classes meet Mondays–Fridays from 8:30am–5:00 p.m. for two weeks, with some evening activities

Residential programs take place at an executive conference facility located within the DC metro region

Senior Leader Program



The Center for Excellence in Public Leadership



Center for Excellence in Public Leadership
 The George Washington University
 2033 K Street, NW, Suite 240
 Washington, DC 20052
 202-994-5390 phone • 202-994-5389 fax
cepl@gwu.edu • www.leadership-programs.org

THE GEORGE
 WASHINGTON
 UNIVERSITY
 WASHINGTON D C

The Senior Leader Program (SLP)

takes career public service professionals to new heights in leadership and management. It's especially designed for senior level managers (a minimum of GS-13 or its equivalent) in the Federal Government and military, as well as state and local officials.

The program objectives and curriculum are built around the Office of Personnel Management's Executive Core Qualifications, allowing you to hone the skills, develop the knowledge, and strengthen the personal qualities you'll need to excel in senior executive positions.

OPM Executive Core Qualifications

- Leading People
- Leading Change
- Results Driven
- Business Acumen
- Building Coalitions

Why Now?

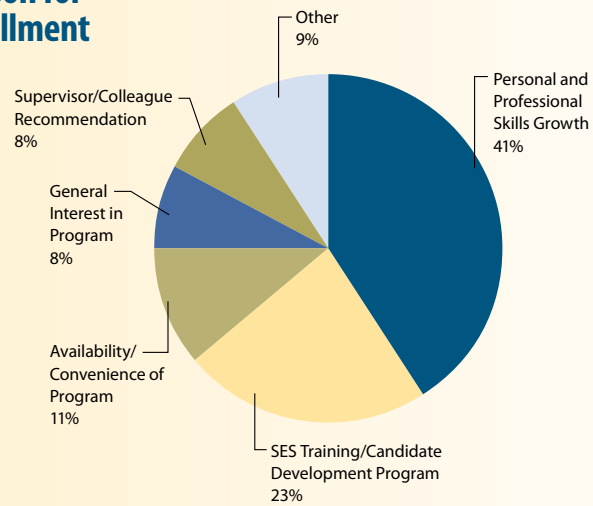
The face of the US workforce is changing. The older generation is retiring and at the same time there is an increased mandate to staff-up within the federal government, challenging agencies to focus on succession planning, knowledge management, and training the next generation of leaders.

Are You Ready?

Increasingly, agencies require leaders who not only have technical expertise but also possess broad-based skills such as strategic management, negotiation, and communication skills. Whether you are enrolled in a formal candidate development program, interested in becoming a more competitive job candidate, or just interested in increasing your professional skills, there is no better time to get the training you need to continue succeeding.



Reason for Enrollment



"I have been through a lot of training but this program was exceptional and I would recommend it to everyone."

Why GWU CEPL?

A Name You Can Trust

Because the Center is housed in The George Washington University College of Professional Studies, our participants have access to the resources of a world-class educational institution, in addition to the professional experts, local leaders, and government agencies found only in the nation's capital.

"The program provided needed information at my current level. I will be able to take back ideas and apply them in the work place."

Curriculum That Challenges You

We recognize that adult learners, especially those who serve in public leadership roles, need an educational experience that is practical, intellectually challenging, and directly applicable to their jobs. The curriculum is presented in a variety of formats, including case studies, group work, and presentations. The program also includes a strategic capstone simulation which challenges you to apply the knowledge you've gained to a real-world situation.

"At the completion of my course, I contacted my agency's Office of Training to provide them with an evaluation of my experience with GWU CEPL. Based on my input, it is my understanding that the GWU SES Development Course I attended will be an option for other U.S. Secret Service SES Developmental Candidates. The Capstone simulation was truly a selling point."

Expert Practitioner Faculty

Since its inception in 1982, CEPL's Senior Leader Program has served thousands of managers and executives from more than 80 government agencies and departments. Our faculty has extensive experience both in the federal, public, and private sectors, allowing them to bring not only theory but practice to the classroom.

"The program's subject matter experts coupled with experiences of classroom colleagues with similar development/career levels provides growth and food for thought, creating an ideal atmosphere for learning. This was the first course of this type that taught me at my level."

Where Do Our Participants Work?

