

Lewis Cotlow

Anthropology Student Research Conference

October 16, 2009

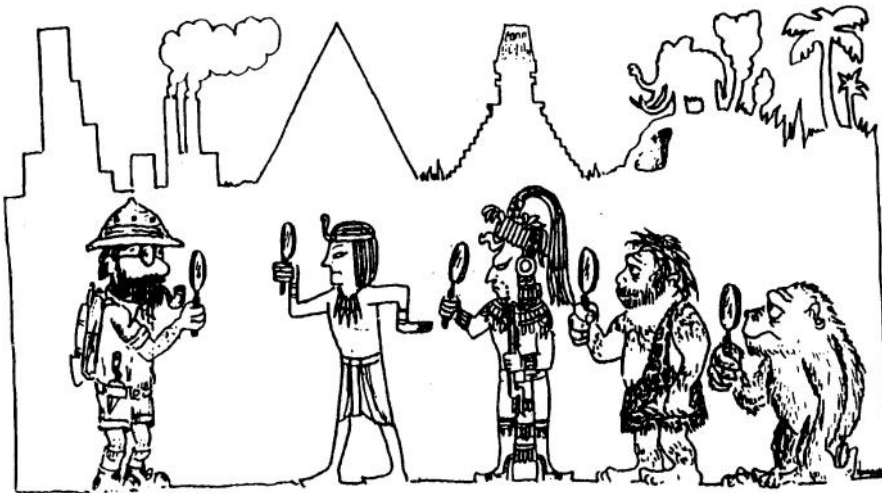
2:00–5:00 p.m.

Reception following

1957 E Street, NW

Room 213, Harry Harding Auditorium

The George Washington University



Artwork © Robert L. Humphrey

Part I

Welcome

Chair: Nic Fourie

PhD candidate in Hominid Paleobiology

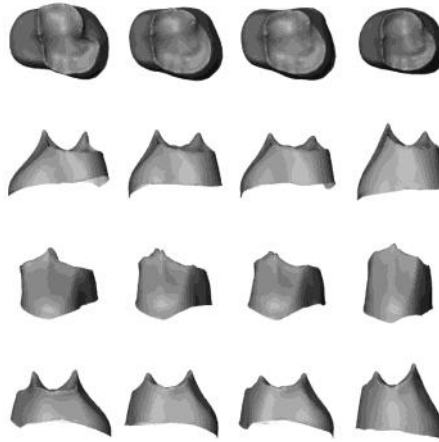
Cotlow award recipient 2008

Enamel-Dentine Junction Morphologies in Pliocene Hominin Premolars

Kes Schroer

PhD. candidate in

Hominid Paleobiology



Australo.
anamensisAustralo.



Getting water at a borehole in central
Tanzania

Faith Tourism as Development?

Nick Stulck

BA candidate in
International Affairs with
a concentration in
International
Development



Hopi Perspectives on the Preservation of Intangible Cultural Heritage

Matt LeDuc

MA candidate in Anthropology (International Development)

Members of the Hopi Footprints of the Ancestors Project at Mesa Verde

The Influence of Social Rank on Tool-Use Efficiency in Tufted Capuchins (*C. libidinosus*)

Katherine Schuhmacher

BS candidate in Biological Anthropology



Cabocio, a subadult capuchin, smashing a nut

A typical botanica in the Little Haiti neighborhood of Miami – a colorful scene of religious and medical pluralism.

Vodou Healers and Hospital Doctors: Medical Pluralism in Little Haiti, Miami

Amanda Eller

BA candidate in International Affairs/
Public Health





“Faraway, So Close”: The Liminal Lives of Unauthorized Sub-Saharan African Migrants in Morocco

Hermon Farahi

MA candidate in Anthropology
(International Development)

Tess, a 25-year-old Nigerian migrant with her 8-month-old infant, awaiting the afternoon call to prayer at a mosque in Tangier. Local Muslims feel a responsibility to offer assistance to the needy.

End of Part I. Intermission

Part II

Chair: Paulina Orchard

MA candidate in Anthropology

Cotlow award recipient, 2004



Called "Berkeley's Big People," this statue is located on Highway 80 on the edge of the San Francisco Bay facing downtown San Francisco. It serves as a monument to the progressive protest spirit of the area.

Progressive Self-Fashioning in Fair Trade Activism: Fair Trade Organizations in San Francisco

Maureen Moodie

MA candidate in Anthropology



Bharatnatyam dance by two second-generation girls at a Tamil Sangam of Greater Washington event.

American Thamizh Makan: Indian Tamil Identity in the Washington, DC Area

Rajiv Menon

BA candidate in International Affairs and English

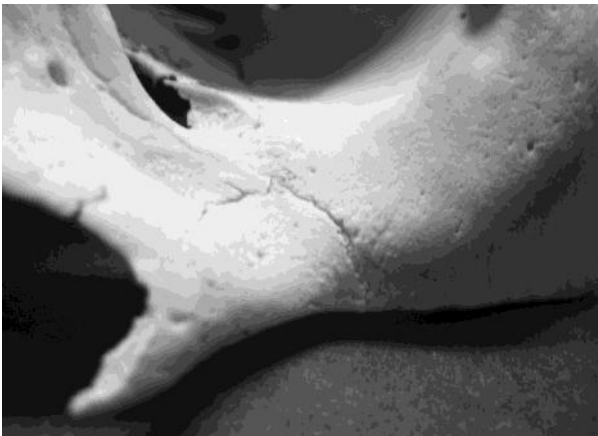
Seeta Menon

BA candidate in Political Science and Philosophy

The Nose Knows: Frontonasal Suture Use in Age-At-Death Determination

Helen Alesbury

B.S. candidate in Biological Anthropology
and B.A. candidate in Archaeology



The frontonasal suture is the line of union between the frontal bone of the skull and the bones of the nose.



“Sufi circle” at a U.S. intentional community.

“I’m Telling You What Is Communism:” Examining the Revival of Intentional Communities in the American South

Nikki-Lee Birdsey

BA candidate in English/American Literature and European History



Couples attending prenatal education classes in Maryland.

¿Comenzando Bien? Authoritative Knowledge, Decision-Making, and Disparities Witnessed through Prenatal Education in Suburban Maryland

Sophie Thibodeau

MA candidate in Anthropology

Thanks

The Department of Anthropology extends thanks to Nic Fourie and Paulina Orchard for chairing the sessions and to Jonathan Higman for preparing the program. Thanks are also due to the Cotlow Committee of Profs. Jeffrey Blomster, Alexander Dent, Ilana Feldman, Chet Sherwood and Barbara Miller (chair). Department staff members Savannah Fetterolf and Kristina Short assisted with conference arrangements.

The Cotlow Fund

Since 1990, the Lewis N. Cotlow Field Research Fund has supported anthropological research by students at the George Washington University in over 40 countries. It was created by a \$150,000 bequest from the estate of Lewis Cotlow (1898-1987), an explorer, author, and filmmaker who attended GW.

Currently enrolled undergraduate and graduate students at GW are eligible to apply for an award. Any research topic relevant to anthropology's four fields is appropriate. Students normally do their field work in the summer and make a presentation at the fall conference.

For a list of Cotlow projects funded to date, sample proposals, and application information, visit the Anthropology Department Web site (www.gwu.edu/~anth/atgw/cotlow.cfm).

Applications for funding for 2010 are due by 5 p.m. on Friday, March 5. Proposals are submitted electronically to cotlowapplication@gmail.com. Students are strongly urged to consult with one or more anthropology faculty members in preparing their proposal and to attend one of the workshops on writing proposals that are offered every year.