

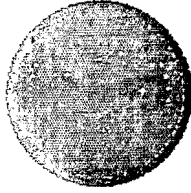
SECRET//REL USA, CAN, AUS and GBR//20080316

BY ORDER OF THE COMMANDER

STRATEGIC COMMAND DIRECTIVE

(SD) 523-2

3 MAY 2004



Operations, Planning, and Command and Control

*THEATER EVENT SYSTEMS (TES)
ARCHITECTURE AND OPERATIONS (U)*

NOTICE: This publication is available only from the OPR.

OPR: OP503 (b)(6) USSC
Supersedes USSPACECOM Instruction (UI)
10-30, 1 March 1999

Certified by: CSS (b)(6) USSC
Pages: 60
Distribution: X

Derived From: DSP SOPG, 16 Mar 98

Declassify On: Source Marked-X1, X3, X4, 16 Mar 98

Date of Source: 16 Mar 98

SECRET//REL USA, CAN, AUS and GBR//20080316

This page left intentionally blank.

(U) This SD provides a description of the Theater Event System (TES) architecture, and provides policy and guidance to the TES elements and the Cheyenne Mountain Missile Warning Center (MWC). This SD is releasable to Canadian, United Kingdom (UK) and Australian personnel occupying positions in forces assigned or attached to North American Aerospace Defense Command (NORAD), United States Strategic Command (USSTRATCOM) and Air Force Space Command (AFSPC) with a strict need-to-know. It applies to USSTRATCOM, its components, associated agencies and activities in support of the Theater Missile Warning (TMW) mission. The reporting requirements in this SD are exempt from Report Control Symbol (RCS) licensing. A glossary of references and supporting information is at Attachment 1.

SUMMARY OF REVISIONS

~~(S//REL)~~ System descriptions have been updated with current information. This SD reflects the inclusion of Space Based Infrared System (SBIRS) technologies. (b)(1) USSC

(b)(1) USSC The Multi-Mission Mobile Processor (M3P) has been added as a TES element. The role of the USSTRATCOM Global Operations Center (GOC) was added. The reporting errors section was updated to provide clarification and procedures for specific types of reporting. (b)(1) USSC

(b)(1) USSC New First Detect First Report (FDFR) procedures have been added. Contingency plan for FDFR conference failures has been added. (b)(1) USSC

(b)(1) USSC TES Areas of Interest (AOIs) have been updated to reflect the current Theater Ballistic Missile (TBM) threats and associated profiles. An updated AOI management policy is outlined. Definitions, instructions, and procedures for (b)(1) USSC

(b)(1) USSC New Operations Capability (OPSCAP) definitions incorporate Theater Satellite Capability (SATCAP). TES elements must notify the MWC as soon as possible (ASAP) of OPSCAP changes, since these could affect the TES Capability (TESCAP) and must be reported to the affected theater. The Daily Operations Report has been changed to the Situation Report (SITREP) for standardization purposes, and format was modified to make information easier to capture by SITREP users, and easier to enter by TES elements. An example SITREP is included. The new TES Exercise Support paragraph outlines exercise request requirements for users (TES Exercise Support Request message) and exercise design procedures for TES elements. A section was added to establish the TES Data Collection and Evaluation process. A TES Operational Measures of Effectiveness (MOE) paragraph was added for informational purposes. A SITREP example has been included.

Table of Contents

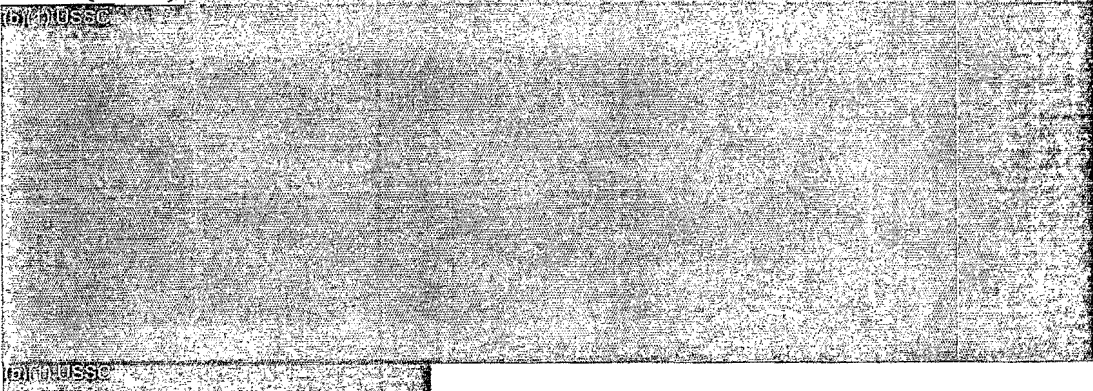
Paragraph	Title	Page
1.	(S/REL) System Description. (U)	6
2.	(S/REL) Mission Event Processing. (U)	9
3.	(S/REL) Mission Criteria. (U)	12
Table 1.	(S/REL) Missile Criteria. (U)	12
Table 2.	(S/REL) Aircraft in Afterburner Criteria. (U)	12
Table 3.	(S/REL) IR Special Events Criteria. (U)	13
4.	(U) Data Warning. (U)	15
Table 4.	(S/REL) Theater and Strategic Class Missiles. (U)	16
Table 5.	(S/REL) Aircraft in Afterburner. (U)	17
Table 6.	(S/REL) IR Special Events. (U)	17
Table 7.	(S/REL) Operational Status Reports. (U)	17
Table 8.	(S/REL) IBS Simplex Source Identification. (U)	18
Table 9.	(S/REL) Theater Class Missiles. (U)	18
Table 10.	(S/REL) Aircraft in Afterburner. (U)	18
Table 11.	(S/REL) Operational Status Reports. (U)	19
5.	(S/REL) Voice Reporting. (U)	19
Figure 1.	(U) FDFR Conference. (U)	20
Table 12.	(S/REL) Voice Warning Call Signs. (U)	21
6.	(S/REL) Area Of Interest Coverage. (U)	24
Figure 2.	(S/REL) TES AOIs (Graphic Representation). (U)	25
7.	(S/REL) TES Capability (TESCAP) and Operations Capability (OPSCAP). (U) ..	27
Figure 3.	(S/REL) TESCAP and OPSCAP. (U)	27
Table 13.	(S/REL) DSP SATCAP. (U)	28
Table 14.	(S/REL) Sensor OPSCAP. (U)	28
Table 15.	(S/REL) Processor OPSCAP. (U)	28
Table 16.	(S/REL) Communications OPSCAP. (U)	29
8.	(S/REL) TES Coverage Requirements. (U)	29
9.	(S/REL) Situation Report (SITREP). (U)	30

10.	(U) TES Exercise Support. (U)	31
11.	(S/REL) TES Operational Data Collection and Evaluation Process. (U)	32
12.	(S/REL) TES Measures of Effectiveness. (U)	33
13.	(S/REL) DELOGs. (U)	34
14.	(U) Reviews. (U)	35
Attachment 1— GLOSSARY OF REFERENCES AND SUPPORTING INFORMATION (U)		36
Attachment 2— SAMPLE SITUATION REPORT MESSAGE FORMAT (U)		40
Attachment 3— SAMPLE EXERCISE SUPPORT REQUEST MESSAGE FORMAT (U)		48
Attachment 4— SAMPLE EXERCISE SUPPORT AIG 232 MESSAGE FORMAT (U)		52
Attachment 5— CATEGORIZED MISSILE THREATS (U)		56
Attachment 6— TIER 1 FDFR NODES (U)		57
Attachment 7— DISTRIBUTION LIST (U)		58

1. (S//REL) System Description. The Theater Event System (TES) provides Theater Missile Warning (TMW), including Shared Early Warning (SEW), to theater users primarily for passive defense. (S//REL) (U//USSC) The TES processes overhead non-imaging infrared (IR) data from Defense Support Program (DSP) (U//USSC) sensors into missile warning, afterburning aircraft (Slow Walker), and IR Special Event (SE) (explosions, fires, etc.) messages. The TES producers send these messages over Integrated Broadcast Service Simplex (IBS-S), Integrated Broadcast Service Interactive (IBS-I), LINK 16, and voice circuits. In the future, TES may incorporate additional IR and radar sources, to include, but not limited to, airborne IR platforms and surface radars. This SD reflects the inclusion of Space Based Infrared System (SBIRS) technologies. These have been included to provide seamless integration of these capabilities as they become available. As a supporting Combatant Commander, Commander USSTRATCOM (CDRUSSTRATCOM) executes the TMW mission in support of Geographic Combatant Commanders (GCCs) (and by extension, all theater users) within their geographic Areas of Responsibility (AOR).

1.1. (S//REL) TES Mission Scope. The TES is used to meet the theater users' requirements for TMW, Slow Walker (SW), IR SE situational awareness, and Battle Space Characterization (BSC). (S//REL) (U//USSC)

1.1.1. (S//REL) (U//USSC)



1.2. (U) TES Elements. The TES is comprised of the following processing and reporting elements: SBIRS Mission Control Station (MCS), SBIRS MCS Backup (MCSB), SBIRS Interim MCS Backup (IMCSB), JTAGS, Tactical Detection and Reporting (TACDAR), and theater M3Ps.

1.2.1. (U) MCS, IMCSB, JTAGS, and theater M3Ps are USSTRATCOM combatant command (COCOM) assets. USSTRATCOM delegates operational control (OPCON) of MCS and IMCSB to Air Force Space Command (AFSPC) and OPCON of JTAGS and theater M3Ps to Army Strategic Command (ARSTRAT). CDRUSSTRATCOM, through the Director of Global Operations (USSTRATCOM/OP), will task the component commanders and MWC through the Global Operations Center (GOC) using mission type orders (e.g., operations orders). The MWC will conduct theater missile warning current operations and task the TES elements as directed in the Operations Order (OPORD). The component commands maintain Direct Liaison Authority (DIRLAUTH)

with each other, and retain OPCON of assigned forces in support of the theater missile warning mission unless otherwise directed by CDRUSSTRATCOM and the Secretary of Defense (SECDEF). USSTRATCOM uses all of the TES elements to fulfill theater commanders' TMW requirements.

1.2.2. (S//REL) JTAGS. JTAGS is operated by ARSTRAT and jointly manned with Naval Network and Space Operations Command (NNSOC). JTAGS is the air transportable, in-theater, mobile element of TES. JTAGS directly receives and processes data from DSP satellites within its field-of-view. JTAGS normally provides dedicated monitoring of the AOR in which it is deployed. (b) (1) USSC

(b) (1) USSC
(b) (1) USSC ARSTRAT has procured five JTAGS. Three operational units are deployed overseas (JTAGS-European Command (JTAGS-EUR), JTAGS-Pacific Command (JTAGS-PAC), and JTAGS-Central Command (JTAGS-CEN)). The two remaining units are currently stationed within CONUS and are used for training and contingency operations in support of the forward deployed detachments.

1.2.3. (U) Theater M3P. The theater M3P will be operated by ARSTRAT and jointly manned with NNSOC. The theater M3P is a functional replacement of JTAGS and will deploy in replacement of each JTAGS in theater.

1.2.4. (S//REL) SBIRS MCS. The MCS is operated by 14th Air Force (14 AF) through 21st Space Wing, 2nd Space Warning Squadron (2 SWS) in addition to the 8 SWS, an Air Force Reserve unit. (b) (1) USSC The MCS can process data from all DSP satellites through remote ground stations and communication satellite relays. (b) (1) USSC

(b) (1) USSC

1.2.5. (S//REL) SBIRS IMCSB. The IMCSB is the interim backup to the MCS and will provide backup until the permanent MCSB is built. (b) (1) USSC The IMCSB is a dual-use system that supports software development when not being used for operations. (b) (1) USSC

(b) (1) USSC

1.2.6. (S//REL) TACDAR. TACDAR is the National System's element of TES. (b) (1) USSC

(b) (1) USSC
(b) (1) USSC

1.2.7. (U) Cheyenne Mountain Missile Warning Center (MWC). The MWC is the command and control element of the TES that facilitates TMW receipt at designated theater command centers. USSTRATCOM, via the MWC, is the overall TES system management authority. The MWC monitors the operational capability (OPSCAP) of the TES, coordinates and de-conflicts scheduled and unscheduled processor downtime, and coordinates AOI assignments with TES elements as necessary. The MWC also monitors the health and status of the TMW architecture to include the TES elements and the IBS-S and IBS-I broadcasts and informs the USSTRATCOM GOC and designated theater users when outages will affect warning in the respective AORs. The MWC also directs short notice critical tasking of MCS/IMCSB and JTACS when time does not permit the information to flow through normal command channels. This applies only if operational impact will occur; all other tasking/requirements will flow through normal staff channels. Additionally, the MWC performs net control functions for voice reporting, coordinates TES-reported events within Cheyenne Mountain Operations Center (CMOC), coordinates time-critical information concerning mission activity with the processor elements, and other command and control functions. The MWC also passes Period of Interest (POI) information to all TES elements and can direct the addition of AOIs to ensure TES coverage of the POI.

1.2.8. (S//REL) MWC-USSTRATCOM Command Relationship. The role of the MWC is to ensure operational TMW systems under the command of USSTRATCOM support the theaters to the level necessary to ensure TMW is received in theater at the designated command centers. The MWC receives TMW data near simultaneously with theater users.

(S//REL) USSC [REDACTED]

(S//REL) USSC The MWC is responsible for:

1.2.8.1. (S//REL) (S//REL) USSC

(S//REL) USSC [REDACTED]

(S//REL) USSC [REDACTED]

1.2.8.2. (S//REL) (S//REL) USSC

(S//REL) USSC [REDACTED]

1.2.8.3. (S//REL) (S//REL) USSC

(S//REL) USSC [REDACTED]

1.3. (S//REL) (S//REL) USSC

(S//REL) USSC [REDACTED]

1.3.1. (S/REL) (b)(7)(F) USSEC
(b)(7)(F) USSEC

1.3.2. (S/REL) (b)(7)(F) USSEC
(b)(7)(F) USSEC

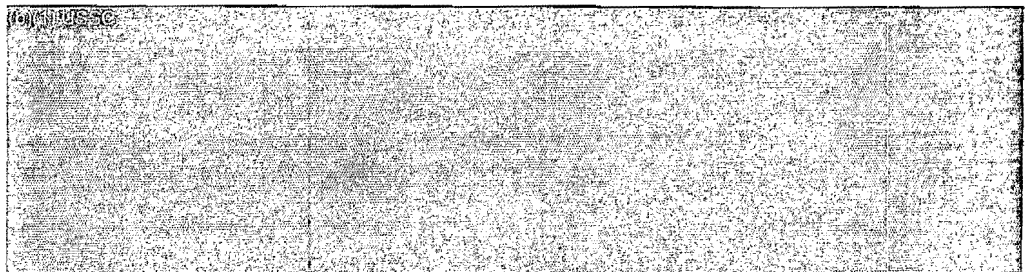
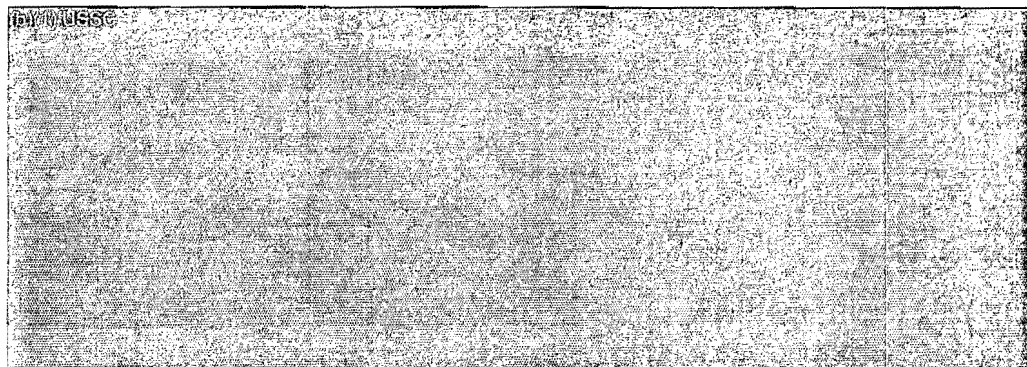
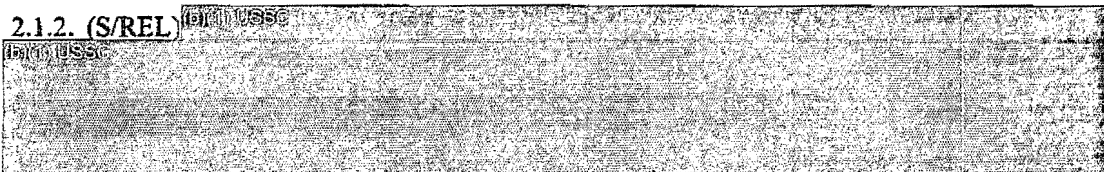
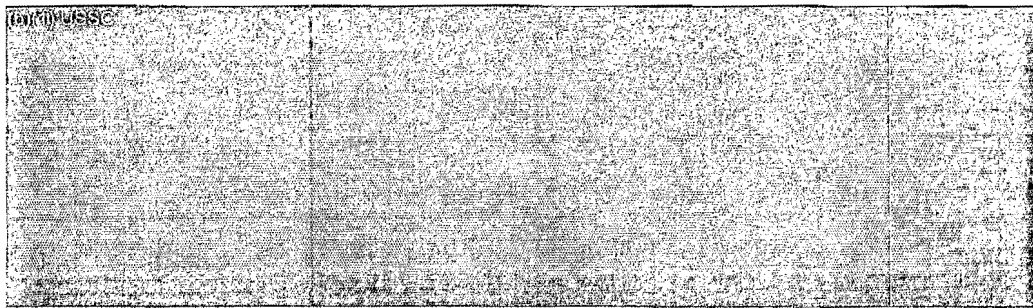
1.3.3. (S/REL) (b)(7)(F) USSEC
(b)(7)(F) USSEC
(b)(7)(F) USSEC

2. (S/REL) Mission Event Processing. USSTRATCOM accomplishes TMW via two methods: 1) Warning Data Direct to Users, and 2) Voice Reporting. (b)(7)(F) USSEC

(b)(7)(F) USSEC
(b)(7)(F) USSEC

2.1. (S/REL) (b)(7)(F) USSEC
(b)(7)(F) USSEC
(b)(7)(F) USSEC

2.1.1. (S/REL) (b)(7)(F) USSEC
(b)(7)(F) USSEC



2.1.4. (S//REL) (b)(1), (b)(7)(C) [Redacted]

2.2. (S//REL) (b)(1), (b)(7)(C) [Redacted]

2.2.1. (S//REL) (b)(1), (b)(7)(C) [Redacted]

(b)(1), (b)(7)(C) [Redacted]

2.2.2. (S//REL) (b)(1), (b)(7)(C) [Redacted]

(b)(1), (b)(7)(C) [Redacted]

3. (S//REL) Mission Criteria. Mission event reports must be reviewed to determine validity prior to release across the tactical networks. The USSTRATCOM goal is to preserve the integrity of and confidence in the TES by releasing only valid mission event reports. (b)(7)(C) US5C

(b)(7)(C) US5C

(b)(7)(C) US5C To standardize reporting procedures, the following mission criteria will apply (Tables 1., 2., 3.).

Table 1. (S//REL) Missile Criteria. (U)

(b)(7)(C) US5C

Table 2. (S//REL) Aircraft in Afterburner Criteria. (U)

(b)(7)(C) US5C

Table 3. (S//REL) IR Special Events Criteria. (U)

(S//REL) USSC	
---------------	--

3.1. (U) Mission Operator. It is the responsibility of the mission operator to evaluate the validity of special IR data regardless of intensity.

3.2. (S//REL) NORAD Command Director (CD). The CD is authorized to enter a POI for specific domestic events (based on Domestic Threat Conference initiation). (S//REL) USSC

(S//REL) USSC	
---------------	--

The CD will use the CMOC Ops Loop to initiate contingency scenario/POIs.

3.3. (U) Mission Criteria Definitions. These definitions have been obtained from operational launches and are general guidelines to aid in determining event validity.

3.3.1. (S//REL) (S//REL) USSC

(S//REL) USSC	
---------------	--

3.3.2. (S//REL) (S//REL) USSC

(S//REL) USSC	
---------------	--

3.3.3. (S//REL) (S//REL) USSC

(S//REL) USSC	
---------------	--

3.3.4. (S/REL)

(b) (1) USSC
(b) (1) USSC
(b) (1) USSC

3.3.5. (S/REL)

(b) (1) USSC
(b) (1) USSC
(b) (1) USSC

3.3.6. (S/REL)

(b) (1) USSC
(b) (1) USSC
(b) (1) USSC

3.3.7. (S/REL)

(b) (1) USSC
(b) (1) USSC
(b) (1) USSC

3.4. (U) Two Action Release. During peacetime operations, TES elements will implement two action release procedures to disseminate missile warning data messages. Two action release is defined as an operator being required to take two separate actions to release a TBM warning message (e.g., having to hit the release button twice before releasing a TBM warning message). Two action release is required to reduce the potential for inadvertent releases. During a crisis or wartime situation, single action release may be implemented at the site commander's discretion.

3.5. (U) Reporting Errors. Reporting errors are TBM events inconsistent with the TES goal of only releasing valid mission event reports. A valid event is defined as any event reported by TES meeting defined release criteria.

3.5.1. (U) False Report. A false report is a released TBM event report which does not meet the release criteria in Table 1, and did not actually occur. The TES element involved will immediately send a cancel data message, and initiate the FDFR conference and report an event cancellation in accordance with (IAW) paragraph 5.8.

3.5.2. (U) Mission Failure. A missed event is a TBM event meeting the release criteria in Table 1, but is not released by an operator. A missed event constitutes mission failure.

3.5.3. (U) Double Release. Release of a single valid TBM event with two different track numbers from the same TES element constitutes a double release. To avoid confusion to users, the TES element involved will immediately send a Cancel Data Message for one of the messages, and immediately activate the appropriate FDFR conference and report the valid missile IAW paragraph 5.2.

3.5.4. (S//REL) Event mis-typing.

TES elements must use all information available to ensure the highest probability of correct event typing. If additional information presents itself, TES elements must update their initial report with the new data. TES elements will provide comments in daily reports to highlight mis-typing causes when a known mis-typing occurs.

3.5.5. (S//REL)

3.5.6. (U) Reporting Error Procedures. When a reporting error occurs, the TES element involved will comply with the applicable paragraph above. If the error was caused by a system problem, the TES element will accomplish required actions to prevent further release of false data. If necessary the TES element will disable the dissemination system to prevent further reporting errors until the problem is corrected. USSTRATCOM component commands must up-channel all system problems to the Space Enhancement Division (USSTRATCOM/OP50) LAW current procedures.

3.6. (S//REL)

TES elements should make every effort to improve TMW to theater users through ongoing modifications to operational software, hardware, and procedures that enhance warning message quality, as well as shorten message release times and arrival times to theaters.

4. (U) Data Warning. TES elements disseminate warning messages over IBS-S and IBS-I. Additional update messages using the same track number may be released if they provide more accurate warning messages to theater users (e.g., missile retyping and additional data points).

4.1. (S//REL)

Table 4. (S//REL) Theater and Strategic Class Missiles. (U)

4.2. (S//REL) IBS-S Format - SW (Table 5.). The following series of reports are authorized for release. Update reports will be transmitted based on the criteria listed in Table 5.

(S//REL) IBS-S

Table 5. (S//REL) Aircraft in Afterburner. (U)

(b) (7) USSC

4.3. (S//REL) IBS-S Format -- SEs (Static, Non-Static) (Table 6). (b) (7) USSC

(b) (7) USSC IR SEs are released over IBS-S and IBS-I.

Table 6. (S//REL) IR Special Events. (U)

(b) (7) USSC

4.4. (S//REL) IBS-S Format - Operational Status Reports (Table 7). (b) (7) USSC

(b) (7) USSC

(b) (7) USSC The reports are displayed at a static location. (b) (7) USSC

(b) (7) USSC

Table 7. (S//REL) Operational Status Reports. (U)

(b) (7) USSC

4.5. (S//REL) IBS-S Source Identification. (b) (7) USSC

(b) (7) USSC

Table 8. (S//REL) IBS Simplex Source Identification. (U)

(S//REL) USSC

4.6. (S//REL) IBS-I Format - Missiles. (S//REL) USSC

(S//REL) USSC

Table 9. (S//REL) Theater Class Missiles. (U)

(S//REL) USSC

4.7. (S//REL) IBS-I Format - SW (Table 10.). (S//REL) USSC

(S//REL) USSC

Table 10. (S//REL) Aircraft in Afterburner. (U)

(S//REL) USSC

4.8. (S//REL) IBS-I Format - Operational Status Reports (Table 11).

(b) (7) (C) (U) (S) (S) (C)

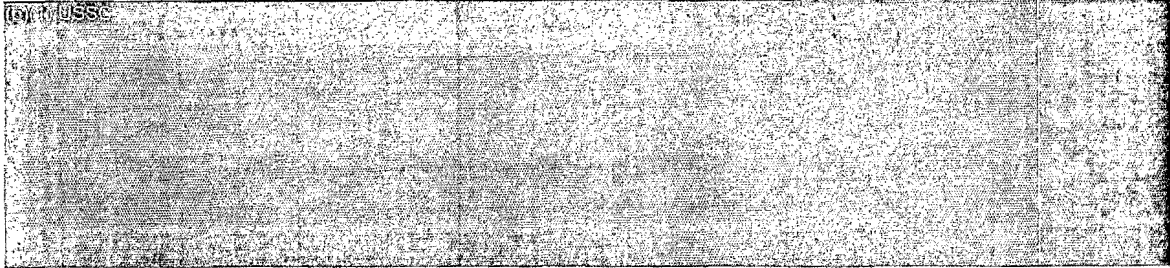


Table 11. (S//REL) Operational Status Reports. (U)

(b) (7) (C) (U) (S) (S) (C)



4.9. (S//REL) LINK 16 Formats.

(b) (7) (C) (U) (S) (S) (C)



5. (S//REL)

(b) (7) (C) (U) (S) (S) (C)



5.1. (S//REL) Voice Reporting Architecture. The voice reporting architecture is based on a FDFR process followed by a voice summarization performed by the MWC (Figure 1). The theater user is responsible for interfacing the theater conference with the CONUS conference and establishing voice distribution within theater.

(b) (7) (C) (U) (S) (S) (C)



5.1.1. (S//REL)

(b) (7) (C) (U) (S) (S) (C)



5.1.2. (S//REL)

(b) (7) (C) (U) (S) (S) (C)



5.2. (S//REL) FDFR Conference Initiation. The FDFR conference begins with an initial voice report.

(b) (7) (C) (U) (S) (S) (C)



(b) (7) (E) (S) (REL) [REDACTED]

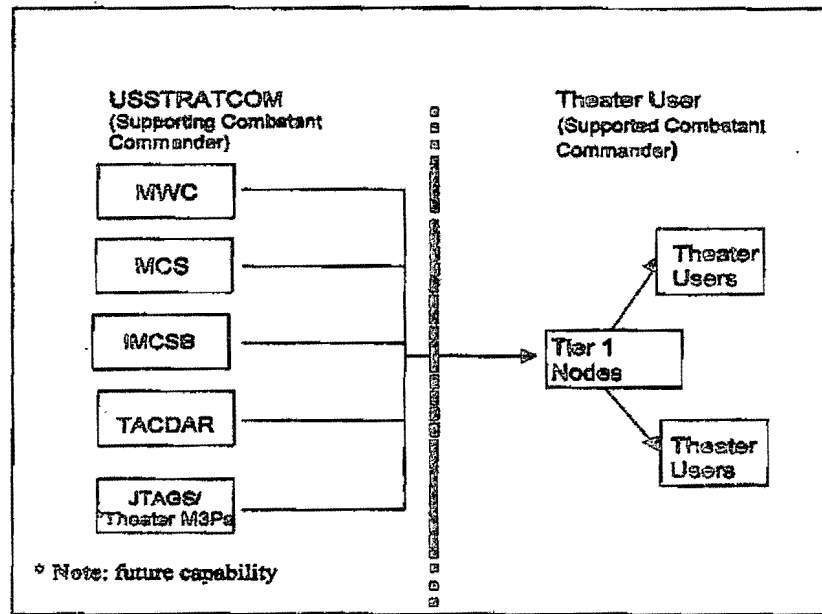
5.2.1. (S/REL) (b) (7) (E) (S) (REL) [REDACTED]

(b) (7) (E) (S) (REL) [REDACTED]

5.2.2. (S/REL) The TES element initiating the FDFR net will report using the applicable formats beginning with paragraph 5.6. (b) (7) (E) (S) (REL) [REDACTED]

(b) (7) (E) (S) (REL) [REDACTED]

Figure 1. (U) FDFR Conference. (U)



5.3. (U) Voice Summarization. The FDFR initial voice report is followed by a MWC query of the remaining TES elements for their report(s). The MWC must report the most accurate information to theaters during the summarization. The MWC is authorized to discount invalid information during the summarization and provide a clarification when appropriate.

5.4. (S/REL) (U//U//SSC) [Redacted]

5.4.1. (S/REL) (U//U//SSC) [Redacted]

5.5. (U) Call Signs. Use call signs listed in Table 12. to accomplish voice reporting and summarization:

Table 12. (S/REL) Voice Warning Call Signs. (U)

5.6. (U) Voice Report Formats. Use the following voice report formats, as required, to accomplish initial voice reporting and voice summarization.

5.6.1. (U) Initial Voice Report Format. The initiating TES element will activate the appropriate FDFR conference and immediately pass the following:

**This is (TES CALL SIGN), Standby for missile launch report. (Repeat 2 times)
(Preface with "exercise, exercise, exercise" if required.)**

(Single or Multiple) launch(es) from (nearest country of launch origin).

Azimuth: (xxx deg or xxx through yyy deg).

Areas/Sectors at risk are: (for USPACOM, provide Korean Common Grid Reference System (KCGRS) sectors only if requested by Tier 1 nodes or 'none', report 'none' for space launch events and strategic class events).

Earliest time of impact: (predicted time of earliest impact in hrs:min:sec Zulu, not required for space launch events or strategic class events).

NOTE: Upon completion of the initial voice report, the initiating TES element or the MWC will poll the appropriate FDFR conferees.

5.6.2. (U) If a FDFR conferee fails to acknowledge when polled, the reporting TES element will reply "Nothing Heard" and continue polling the FDFR conferees. The method used to relay to missing conferees will usually be a formally identified alternate direct line. It is at the discretion of all FDFR conferees whether to remain on a conference throughout the duration of the event. Operational necessity may require FDFR conferees to abandon the FDFR in favor of more critical tasks during a TBM event. The MWC or TES element should expect no response from some users, particularly during real world events. In the event a Tier 1 user must drop from the FDFR net, the statement, "Break, Break, This is (Key Node) Out" will be used to inform the MWC that the Tier 1 user is leaving the net and has all necessary information to complete in-theater warning requirements.

5.7. (U) Voice Summarization Format. Immediately following the initial voice report, the initiating TES element will turn control of the FDFR net over to MWC by stating, **(U) you now have the net.** The MWC will accomplish the summary confirmation beginning with a poll of the applicable TES elements as follows:



"This is (TES CALL SIGN). Concur, "Over"

"This is (TES CALL SIGN). (Report only those lines which are different from earlier reports), "Over"

"This is (TES CALL SIGN). Nothing to report, "Over"

After all TES Elements have reported, the MWC will provide a summary, reporting the most accurate information.

"This is [REDACTED] with a summary confirmation." (Preface with "exercise, exercise, exercise" .. required)

(Single/Multiple) launch(es) from (nearest country of launch origin).

Azimuth: (xxx deg or xxx through yyy deg).

Areas/Sectors at risk are: (for USPACOM, provide KCGRS sectors only if requested by Tier 1 nodes or 'none'; report 'none' for space launch events and strategic class events).

Earliest time of impact: (predicted time of earliest impact in hrs:min:sec Zulu, not required for space launch events or strategic class events)."

After the MWC completes the summary report, it will conduct a final poll of the Tier 1 nodes IAW paragraph 5.7.6.

"(Tier 1 mode callsign), how copy, over?"

5.8. (U) Multiple Events. If additional events occur while the FDFR conference is in progress, the detecting TES element(s) will break in and state, "Break, break. This is (TES CALL SIGN)" and pass additional event information. The MWC will then proceed with the voice summarization.

5.9. (U) Canceled Events. In the event a TES element releases any data report including CEW or SAM/ABM events it did not intend to release, or otherwise determined was invalid or did not occur (False Reports and Non-Reportable Events only), the releasing TES element will use the following format.

"This is (TES CALL SIGN). (Preface with "exercise, exercise, exercise" if required.) Cancel, Cancel, Cancel. (Single/Multiple or strategic missile) launch(es) from (nearest country of launch origin)."

The MWC will then initiate the cancellation summary. MWC will poll the remaining TES elements as follows: "This is [REDACTED] (TES CALL SIGN), Report, Over."

When polled by MWC, the TES element(s) will report: "(TES CALL SIGN). All clear."

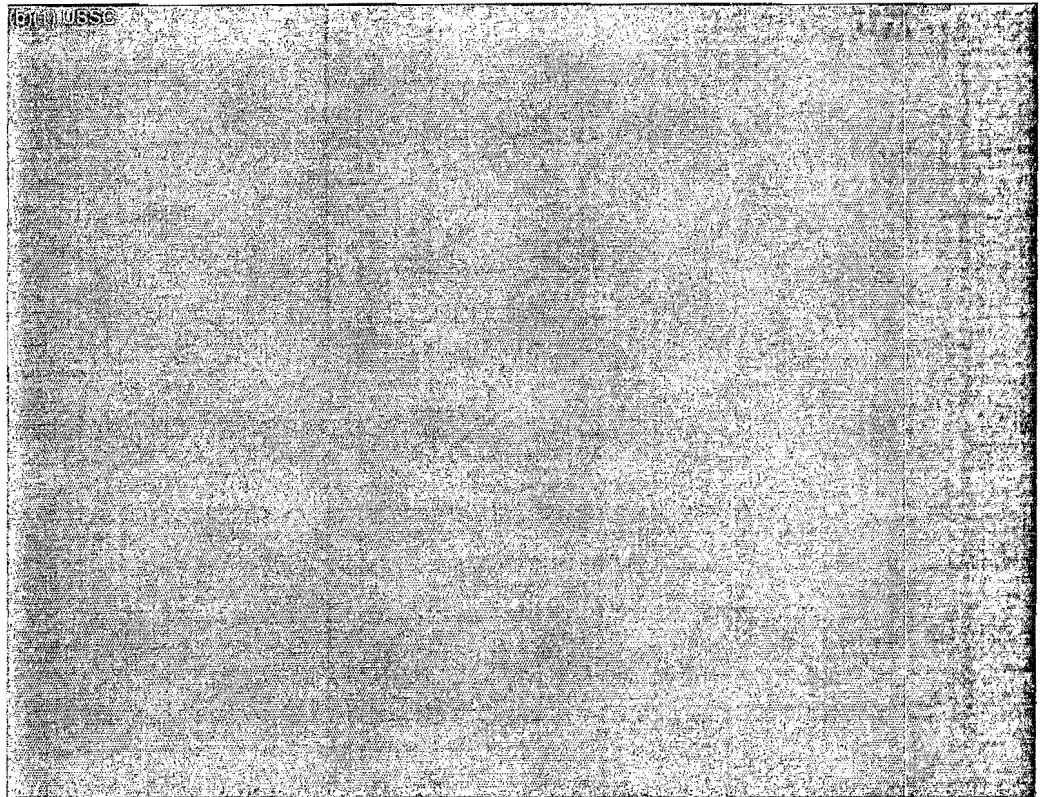
After all the TES Elements have reported, MWC will provide a cancellation summary.

"This is [REDACTED] (Preface with exercise, exercise, exercise if required.) Cancel, Cancel, Cancel". (Single or Multiple) launch(es) from (nearest country of launch origin)."

After the cancellation summary the MWC will conduct a poll of the FDFR conferees as follows: "(CALL SIGN), how copy, over?"

5.10. (S/REL) [REDACTED]

[REDACTED]



5.11. (U) Missile Event Conference (MEC). While the FDFR conference is occurring, the CMOCC Combined Command Center (CCC) will request activation of the MEC from the NMCC. Specific verbiage for reports is contained in reference (d). The purpose of this conference is to alert and inform command centers and senior authorities of potentially threatening events and convey AOR assessments. This conference also provides closure on the event(s) and eliminates the "verification" call the MWC used to make to the theater after completion of the FDFR conference. TFS elements have no role in this conference.

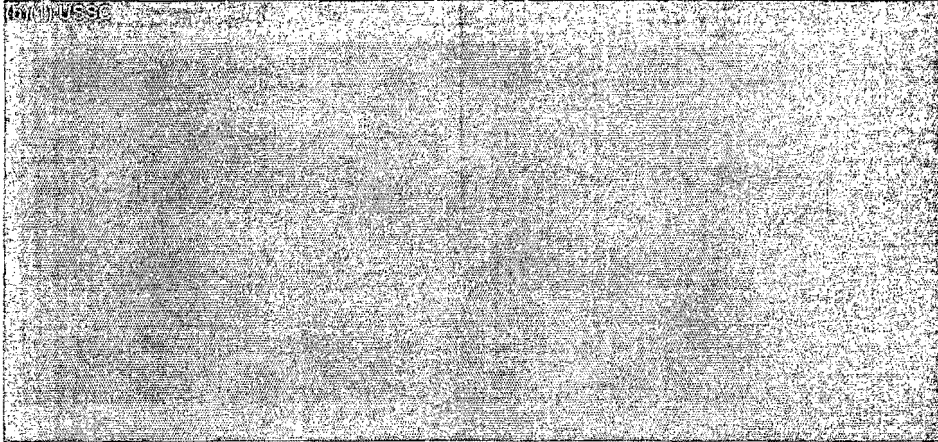
6. (S//REL) Area Of Interest Coverage.

6.1. (S//REL) AOI Definition. The AOIs were defined by determining which countries have a TBM launch capability and/or SW capability detectable by DSP. (b)(1) USSC

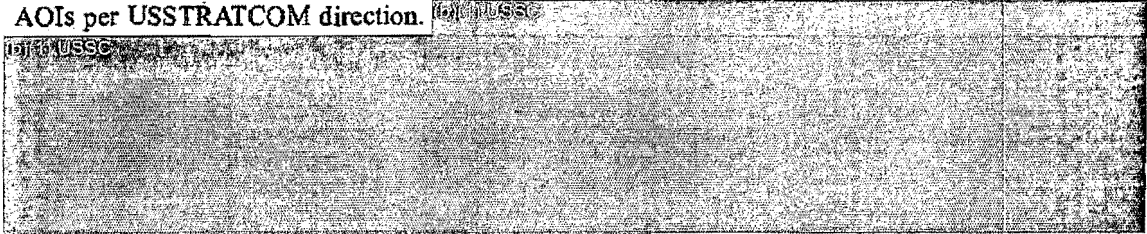




Figure 2. (S//REL) TES AOIs (Graphic Representation). (U)



6.2. (S//REL) Reportable Missile Events. Missile types identified by USSTRATCOM/OP50 are TES reportable missile events. The TES elements will configure their systems to monitor the applicable AOIs per USSTRATCOM direction. (S//REL) USSC



6.3. (S//REL) Reportable Areas. The AOIs defined in Figure 2. are the standard locations for TES elements to release real-time warning messages on TBM, SW, and SEs. (S//REL) USSC



6.4. (S//REL) AOI Responsibilities. (S//REL) USSC



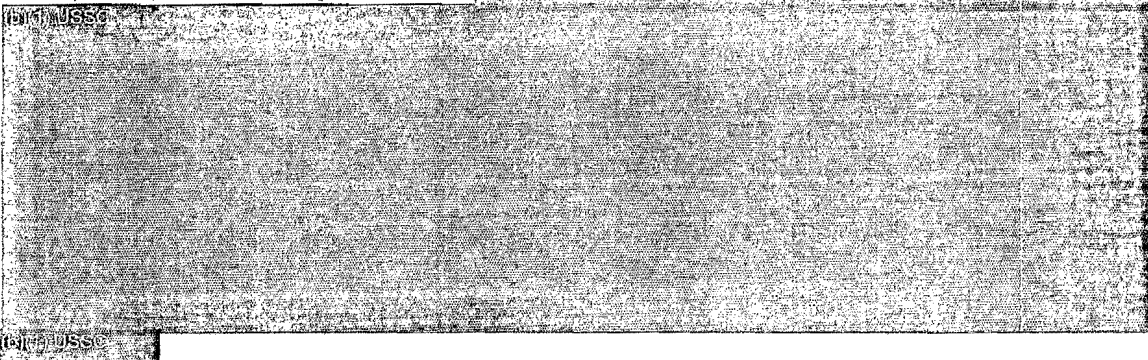
Additional AOIs may be added to support real-world taskings.

6.5. (U) AOI Management. USSTRATCOM/OP has overall TES AOI management responsibility. USSTRATCOM/OP50 staffs proposed changes to the AOI database (e.g., geographic areas and missile profiles) through the Profile Working Group (PWG). The MWC manages real-time AOI config-

uration changes to maintain TESCAP GREEN for each AOL. These changes are normally driven by scheduled and unscheduled outages. When a conflict or potential conflict situation develops within an AOR with known TBM threats, a USSTRATCOM OPORD will define specific relationships that may be authorized between the theater user and 14 AF (for SBIRS MCS) and ARSTRAT (for JTAGS). Through this relationship, the theater may request, or 14 AF/ARSTRAT will consider implementing MCS/JTAGS BSC support. Specific BSC options include Enhanced IR Coverage, CV, and Area Watch. Theater users should specify the desired effect they are looking for and allow the flexibility for 14 AF or ARSTRAT to determine which method of BSC achieves the desired effect. During MCS and JTAGS BSC support, the MWC will maintain TESCAP requirements outlined in paragraph 9.


6.6. ~~(S//REL)~~ Constant Vigilance (CV). ~~(b) (1) USSC~~

~~(b) (1) USSC~~



6.7. ~~(S//REL)~~ Area Watch. ~~(b) (1) USSC~~

~~(b) (1) USSC~~



6.8. ~~(S//REL)~~ Enhanced Coverage (EC). ~~(b) (1) USSC~~

~~(b) (1) USSC~~



6.9. ~~(S//REL)~~ Missile profile process. Due to the dynamic mission requirements of TMW and the constantly changing threat, the profile updating process must be responsive and timely. New profile requirements must be quickly identified and implemented to meet theater user TMW requirements. Once a new profile is ready for installation, it must be installed without delaying it to wait for other required software modifications. ~~(b) (1) USSC~~

~~(b) (1) USSC~~

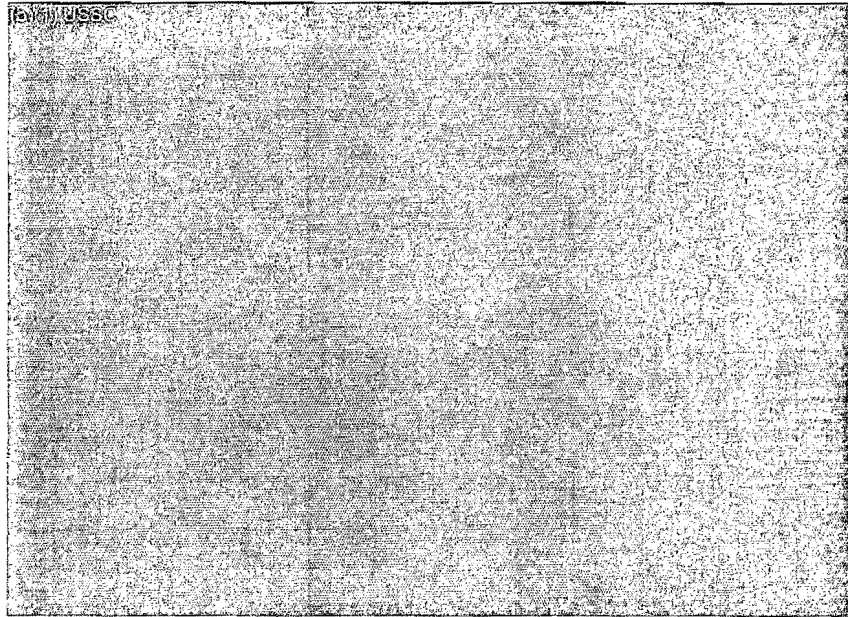


(b)(7)(U) USSC
(b)(7)(U) USSC The PWG operates IAW an established charter, which outlines all roles and responsibilities for each member of the PWG.

7. (S//REL) TES Capability (TESCAP) and Operations Capability (OPSCAP). TESCAP is an overall assessment of TES ability to meet TMW operational requirements. (b)(7)(U) USSC

(b)(7)(U) USSC
(b)(7)(U) USSC

Figure 3. (S//REL) TESCAP and OPSCAP. (U)



7.1. (U) TESCAP and OPSCAP Color Codes. Both TESCAP and OPSCAP are described by color codes.


- 7.1.1. (S//REL) (b)(7)(U) USSC
- 7.1.2. (S//REL) (b)(7)(U) USSC
- 7.1.3. (S//REL) (b)(7)(U) USSC

7.2. (S//REL) Sensor OPSCAP and DSP Theater Satellite Capability (SATCAP). (b)(7)(U) USSC

(b)(7)(U) USSC
(b)(7)(U) USSC

Table 13. (S//REL) DSP SATCAP. (U)

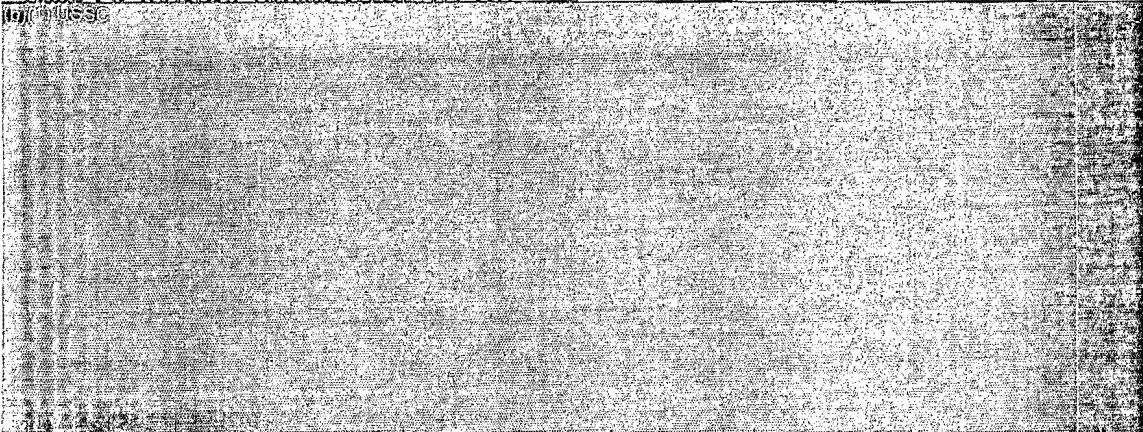
(b) (1) USSC



7.2.1. (U) Sensor OPSCAP is based on the system receiving quality data from a sufficient number of sensors to achieve the accuracies stated in system specifications. Additionally, for determination of AOI OPSCAP status ratings, 100 percent stereo coverage of an AOI is necessary for an AOI to be considered OPSCAP green. MCS can use Minimum Detectable Signal (MDS) instead of SATCAP to report AOI OPSCAP. The MDS in a given AOI is compared to the closeout threshold of the minimum threat missile, to effectively determine a real-time, automatic, AOI-specific SATCAP.

Table 14. (S//REL) Sensor OPSCAP. (U)

(b) (1) USSC



7.3. (S//REL) (b) (1) USSC

(b) (1) USSC



7.4. (U) Processor. Status is based on the processor having the capability to process data from mission events and produce a warning report.

Table 15. (S//REL) Processor OPSCAP. (U)

(b) (1) USSC



7.5. (S//REL) Communications.

(S//REL) [Redacted]

(S//REL) [Redacted]

Table 16. (S//REL) Communications OPSCAP. (U)

[Redacted Table Content]

7.6. (U) OPSCAP Reporting.

7.6.1. (U) Outages. When an OPSCAP change occurs which exceeds, or is expected to exceed 2 minutes, TES elements will immediately report the outage, cause, and estimated time of return to operation (ETRO) to the MWC and their respective component operations centers. Outages not expected to exceed 2 minutes are not reported. Information about any ongoing outage lasting longer than 2 minutes in duration is classified and must be reported by secure means. Upon termination, an outage generally becomes unclassified. The MWC will report the overall TES capability to the affected theater(s). When the outage no longer exists, the TES element will immediately notify the MWC and its respective component operations centers of the change in OPSCAP status.

7.6.2. (U) Scheduled Outages. The TES element crew commander must obtain approval before performing any maintenance that will degrade its site OPSCAP. Site personnel will contact the MWC and their respective component operations centers for verification and final approval of scheduled outages 30 minutes and 5 minutes prior to outage start time. If the MWC disapproves the downtime (e.g., to maintain TESCAP coverage), an attempt will be made to reschedule as soon as possible. If approved, the site may be recalled from the scheduled downtime when the TES element's coverage is required. Upon outage completion, TES elements immediately notify the MWC and its respective component operations centers of the change in OPSCAP status.

7.6.3. (S//REL) Broadcast Outages.

(S//REL) [Redacted]

8. (S//REL) TES Coverage Requirements.

(S//REL) [Redacted] The TES elements will notify the MWC and their respective component operations centers of individual OPSCAP reporting per AOI or area within system processing. (S//REL) [Redacted]

(S//REL) [Redacted]

8.1. (U) TES Maintenance/Downtime. The TES elements are required to forecast downtimes and provide this information to MWC. For MCS, this input comes from 2 SWS via the Monthly Maintenance Schedule (MMS). For JTAGS, this comes from ARSTRAT. The TACDAR downtime notifications come directly from TACDAR. The MWC consolidates and de-conflicts inputs, maintains a master schedule and has the responsibility to approve/disapprove the schedule. Real-time requests are worked directly with the MWC.

8.2. (U) The MWC is responsible for managing overall TES coverage to ensure theater warning is available, and can modify the maintenance downtimes to ensure TESCAP remains GREEN whenever possible. The CMOC CCC is responsible to notify USSTRATCOM/OP and applicable GCCs with any overall TES coverage degradations. Each TES element is required to notify the MWC and their respective component operations centers 30 minutes and 5 minutes prior to scheduled downtime.

9. (S//REL) Situation Report (SITREP). Each TES element will submit a SITREP covering the previous 24-hour period to USSTRATCOM/OP50 and the USSTRATCOM Nuclear Operations C2 Division (OP13). (b)(1)USSC

(b)(1)USSC
(b)(1)USSC

9.1. (U) Subject. The subject is: (UNIT) SITUATION REPORT FOR THE PERIOD XX AAAA Z MON YY TO XX AAAA Z MON YY (XX is day, AAAA is Zulu time, and MON YY is the month and year).

9.2. (U) Statement. Include the following statements: "All paragraphs and sub-paragraphs in this report are classified SECRET unless otherwise indicated. Any information extracted from this report must be marked in accordance with current security guidance." (NOTE: The TACDAR SITREP will be classified at a higher level than SECRET.)

9.3. (S//REL) Classification. (b)(1)USSC
(b)(1)USSC
(b)(1)USSC

9.4. (U) Software. List the current software version.

9.5. (S//REL) Flights. (b)(1)USSC

9.6. (S//REL) SITREP. (b)(1)USSC

9.6.1. (S//REL) Part 1. TBMs. (b)(1)USSC
(b)(1)USSC
(b)(1)USSC

9.6.2. (S//REL) Part 2. Slow Walkers. (b)(1)USSC

9.6.3. (S//REL) Part 3. SEs. (b)(1)USSC

9.6.4. (S//REL) Part 4. False Report or Non Reportable Release. (b)(1)USSC
(b)(1)USSC

9.6.5. (S//REL) Part 5. Areas of Interest.

9.6.5.1. (S//REL) AOI Status. (b)(7)(U)SSC [Redacted]

9.6.5.2. (S//REL) CV/Area Watch Operations/Enhanced IR Coverage. (b)(7)(U)SSC [Redacted]

9.6.6. (S//REL) Part 6. System Status.

9.6.6.1. (S//REL) Sensor Input. (b)(7)(U)SSC [Redacted]

9.6.6.2. (S//REL) Processor Status. (b)(7)(U)SSC [Redacted]

9.6.6.3. (S//REL) Dissemination Connectivity Status. (b)(7)(U)SSC [Redacted]

9.6.7. (S//REL) Part 7. Remarks. (b)(7)(U)SSC [Redacted]

10. (U) TES Exercise Support. Supporting theater exercises is critical to support USSTRATCOM internal and external training requirements. USSTRATCOM/OP503 will be the focal point for all TMW exercise support including simulation support through the Missile Defense Space Tool (MDST). USSTRATCOM/OP503 will coordinate all exercise tasking, and exercise scripts, and will ensure the GOC Space Ops Watch is prepared as the real-time POC for short notice exercise issues such as changes, cancellations or feedback. For TMW exercises including SEW exercises involving the MWC as a participant, an after action report will be generated by the theater exercise controller. All TES exercise participants will provide feedback. A final report will be provided to all TES participants.

10.1. (U) Exercise and Test Design. The TES elements will use actual operational hardware, software and procedures to the maximum extent possible for exercises and tests. For each exercise or test requiring TES support, USSTRATCOM/OP503 will determine if the TES processor elements or a simulation device will support the exercise or test, taking into account the requirements of the requesting agency. USSTRATCOM/OP503 will provide the MWC and all participating TES elements or simulation organizations the missile launch scenario, the voice reporting requirements and templates (if different than real world).

10.1.1. (S//REL) (b)(7)(U)SSC [Redacted]

10.1.2. (S//REL)

(b)(1) USSC

(b)(1) USSC

(b)(1) USSC

10.2. (S//REL) Exercise and Test coordination.

(b)(1) USSC

(b)(1) USSC

IBS-S and IBS-I are the operational broadcast systems to deliver warning to theaters. All TBM exercise traffic must be coordinated through USSTRATCOM/OP503 using the TES Exercise Support Request message at Attachment 3 at least 45 days prior to the start of the exercise scenario.

(b)(1) USSC

10.3. (U) USSTRATCOM/OP503 will determine which individual TES elements will support the request. USSTRATCOM/OP503 will coordinate with the IBS Support Office (IBSSO) to broadcast exercise events. If the research and development or exercise channels are desired, requesters will liaison directly with the IBSSO. Additionally, USSTRATCOM/OP503 will periodically release a message listing pending exercises. USSTRATCOM/OP503 will release a TES support message to Address Information Group (AIG) 232 providing exercise details no later than 21 days prior to the start of the exercise scenario. Additionally, each TES element or simulation agency participating in the exercise is required to notify the MWC 30 minutes and 5 minutes prior to injecting exercise data. TES elements will inform the MWC which exercise they are supporting, number and type of missiles, dissemination systems to be used, time of exercise injections, and voice reporting (if required), and time of exercise injections.

10.4. (U) Exercise Methodology. The TES elements must keep exercise and real-world data separate and clearly identified. The MWC will normally have the theater representatives displays set to receive real-world data. Upon notification from the TES elements of an exercise, the MWC will ensure the Processing and Display Subsystem Migration (PDS-M) is configured to receive real-world and exercise data. To the maximum extent possible, the injecting TES element will be responsible for initiation of the FDFR.

11. (S//REL) TES Operational Data Collection and Evaluation Process. The purpose of TES operational evaluation is to improve TES support to theater users. The USSTRATCOM Combat Systems Branch (PR126) has established the standard for TES operational evaluation and is the office of primary responsibility for the execution of TES operational evaluations.

(b)(1) USSC

(b)(1) USSC

(b)(1) USSC

12.9. (S//REL) [REDACTED]

12.10. (S//REL) [REDACTED]

13. (S//REL) **DELOGs.** A DELOG is the process of reviewing post mission data to look at past events or additional IR data not previously observed or reported. [REDACTED]

13.1. (S//REL) **DELOG Categories.** DELOGs are divided into two categories: Emergency and Routine.

13.1.1. (S//REL) **Emergency DELOG requests** are those [REDACTED]

13.1.2. (S//REL) **Routine DELOG requests** are those [REDACTED]

13.2. (S//REL) **Tasking Authority.** [REDACTED]

13.3. (U) **DELOG Request Format.** Requests will include the following information:

13.3.1. (U) **Type of Event.** A brief description of what is being looked for such as reentry, missile launch, aircraft accident, etc.

13.3.2. (U) **DELOG Type.** Emergency or routine.

13.3.3. (U) **DELOG Time Window.** Each request should be in a 30-minute window.

13.3.4. (U) **Location.** Lat/Long of event.

13.4. (U) **DELOG Result Format.** Results will be reported in the following format:

13.4.1. (U) **DELOG Result.** Positive or negative.

13.4.2. (U) **DELOG Event Date Time Group (DTG).**

13.4.3. (U) **DELOG Event Location.** Lat/Long.

13.4.4. (U) **Satellite(s) (Flight Number) detecting event and maximum intensity detected on each.**

13.4.5. (U) **Report if motion was detected on each satellite.**

13.4.6. (U) **Comments.** Any pertinent comments associated with the DELOG request.

14. (U) Reviews. This publication will be reviewed biannually and updated, as required, by USSTRAT-COM/OP50.


Command Secretariat

Major, USAF

Attachment 1

GLOSSARY OF REFERENCES AND SUPPORTING INFORMATION (U)

References

- (a) Tactical Broadcast Users Guide, July 2002
- (b) Integrated Broadcast Service Producer Guide, 1 August 1999
- (c) UI 10-23, (S) Integrated Tactical Warning and Attack Assessment (ITW/AA) Procedures and System Description (Missile and NUDET Warning Only) (U), 1 June 2000
- (d) Emergency Action Procedures of the Chairman of the Joint Chiefs of Staff Volume VI, Emergency Conferences for Tactical Warning and Attack Assessment

Abbreviations and Acronyms (Unclassified unless marked otherwise.)

14 AF—14th Air Force
14AF/AOC—14th Air Force Air Operations Center
2 SWS—2nd Space Warning Squadron
AB—MWC Call Sign
ABM—Anti-Ballistic Missile
AFB—Air Force Base
AFSPC—Air Force Space Command
AIG—Address Information Group
AOI—Area of Interest
AOR—Area of Responsibility
ARSTRAT—Army Strategic Command
ASAP—as soon as possible
ATACMS—Army Tactical Missile System
AUS—Australia
BSC—Battle Space Characterization
CAN—Canada
CCC—Combined Command Center
CDRUSSTRATCOM—Commander, USSTRATCOM
CEW—Combined Early Warning
CI—Correlation Index
CMOC—Cheyenne Mountain Operations Center

CONUS—Continental United States

CTT—Commanders' Tactical Terminal

CV—Constant Vigilance

DSP—Defense Support Program

(S) ~~(b)(7)(C) USSC~~

DTG—Date Time Group

ELINT—Electronic Intelligence

ESC—Electronic Systems Center

ETRO—Estimated Time of Return to Operation

FDFR—First Detect First Report

FROG—free rocket over ground

ft—feet

GBR—Great Britain

GCC—Geographic Combatant Commanders

GCN—Ground Communications Network

GOC—Global Operations Center

HHQ—Higher Headquarters

HQ—Headquarters

IAW—in accordance with

IBS—Integrated Broadcast Service

IBS-I—Integrated Broadcast Service-Interactive (formerly TIBS)

IBS-S—Integrated Broadcast Service-Simplex (formerly TDDS)

ICBM—Intercontinental Ballistic Missile

IMCSB—Interim Mission Control Station Backup

IR—Infrared

ITW/AA—Integrated Tactical Warning and Attack Assessment

JTAGS—Joint Tactical Ground Station

JTAGS-CEN—Joint Tactical Ground Station-Central Command

JTAGS-COS—Joint Tactical Ground Station-Colorado Springs Contingency Unit

JTAGS-EUR—Joint Tactical Ground Station-European Command

JTAGS-PAC—Joint Tactical Ground Station-Pacific Command

JTAGS-TX—Joint Tactical Ground Station-Texas (Ft Bliss) Contingency Unit

KCGRS—Korean Common Grid Reference System
KM—Kilometer
KTs—knots
Kw/S—Kilowatts per Steradian
Lat/Long—Latitude/Longitude
M3P—Multi-Mission Mobile Processor
MATT—Multi-Mission Advanced Tactical Terminal
MCS—Mission Control Station
MDS—Minimum Detectable Signal
MDST—Missile Defense Space Tool
MEC—Missile Event Conference
MOE—Measures of Effectiveness
MWC—Missile Warning Center
NASIC—National Air and Space Intelligence Center
NNSOC—Naval Network and Space Operations Command
NORAD—North American Aerospace Defense Command
NZL—New Zealand
OPORD—Operations Order
OPSCAP—Operational Capability
Pd—probability of detecting
POC—Point of Contact
POI—Period of Interest
PWG—Profile Working Group
SAM—Surface-to-Air Missile
SATCAP—Satellite Capability
SBIRS—Space-Based Infrared System
SD—Strategic Command Directive
SE—Special Events (fires, explosions, and other events of interest)
SENSOREP—Sensor Report
SEW—Shared Early Warning
SITREP—Situation Report
SL—Space Launch

SLBM—Submarine-launched Ballistic Missile
ST—Subscriber Terminal
SW—Slow Walker
TAC—Threat Area Coverage
TACDAR—Tactical Detection and Reporting
TBM—Theater Ballistic Missile
TDDS—Tactical Related Applications (TRAP) Data Dissemination System
TDIMF—Tactical Data Inter-computer Message Format
TES—Theater Event System
TESCAP—Theater Event System Capability
TIBS—Tactical Information Broadcast Service
TMW—Theater Missile Warning
TRAP—Tactical Related Applications
TRS—Tactical Receive Suite
UFO—UHF Follow-on
UHF—ultra high frequency
UK—United Kingdom
U.S.—United States
USCENTCOM—United States Central Command
USEUCOM—United States European Command
USPACOM—United States Pacific Command
USSOUTHCOM—United States Southern Command
USSTRATCOM—United States Strategic Command
USSTRATCOM/OP—Global Operations Directorate
USSTRATCOM/OP13—Nuclear Operations C2 Division
USSTRATCOM/OP50—Space Enhancement Division
USSTRATCOM/OP503—Missile Warning Branch
USSTRATCOM/PR126—USSTRATCOM Combat Systems Branch

Attachment 2

SAMPLE SITUATION REPORT MESSAGE FORMAT (U)

(b) (1) (U) SSC

MSGID/SITREP/REPORTING UNIT/JULIAN DAY/MONTH//

REF/A//

PERIOD/TIME FROM/TO:DDTTTZZ/DDTTTZZMMMYR//

HEADING/OWN SITUATION//

(b) (1) (U) SSC

GENTEXT/GENERAL/(U-FOUO)/

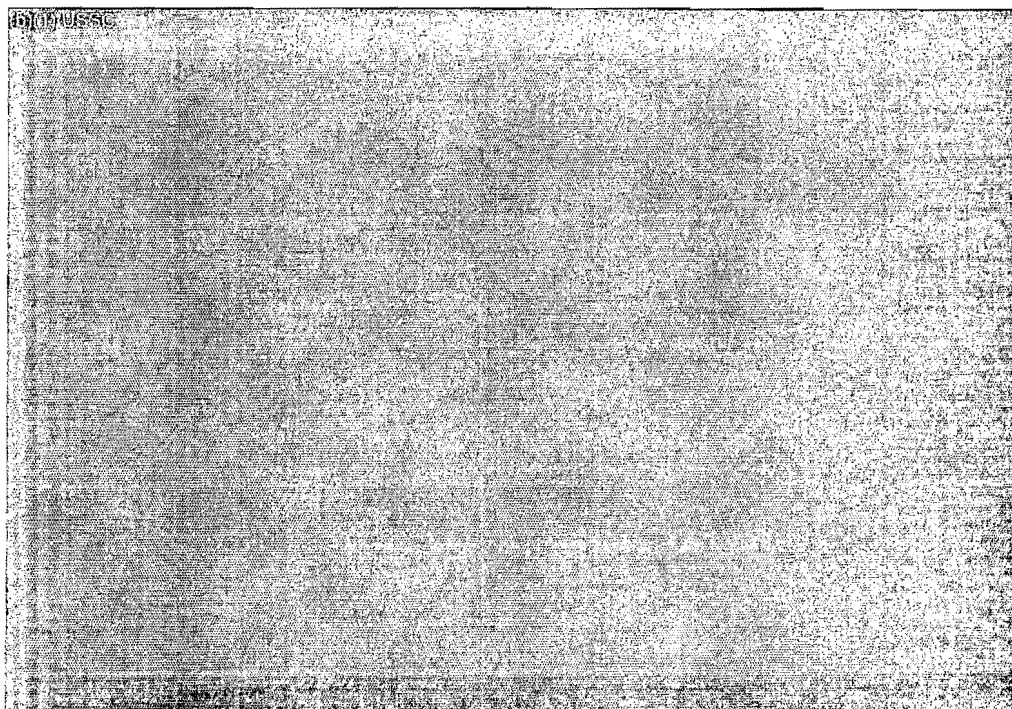
1. SOFTWARE VERSION: CURRENT SOFTWARE VERSION (AS APPLICABLE)//

(b) (1) (U) SSC

GENTEXT/SITUATION/(U-FOUO)/NSTR//

GENTEXT/OPERATIONS/(SECRET/REL TO USA/AUS/CAN/GBR//X3)/CURRENT OPERATIONS STATUS, SCHEDULED PMI'S AND RECALL TIMES, AREAS COVERED ETC:

SURVIVABLE MISSILE WARNING COVERAGE EXAMPLE:



1. DEFCON STATUS/CURRENT DEFCON //

2. FORCE PROTECTION/

A. FPCON STATUS/CURRENT FPCON//

B. INFOCON STATUS/CURRENT INFOCON//

3. OPSCAPS/SYSCAPS/

A. TAC OPSCAP DEGRADATIONS

TAC	STATUS	START/STOP	TOTAL	REMARKS
LIST DEGRADATIONS OR NSTR//				

B. SITE OPSCAP DEGRADATIONS

SITE STATUS START/STOP TOTAL REMARKS
LIST DEGRADATIONS OR NSTR //

C. 

SYSTEM STATUS START/STOP TOTAL REMARKS
LIST DEGRADATIONS OR NSTR //

D. AOI OPSCAP DEGRADATIONS

AOI STATUS START/STOP TOTAL REMARKS
LIST DEGRADATIONS OR NSTR//

E. SYSCAP

SYSCAP STATUS START/STOP TOTAL REMARKS
LIST DEGRADATIONS OR NSTR//

4. SPACE SEGMENT/

A. SENSOR OPSCAP DEGRADATIONS 

STATUS START/STOP TOTAL REMARKS
LIST DEGRADATIONS OR NSTR//

5. GROUND SEGMENT/

A. CONTACT SUMMARY/

PROGRAM TOTAL SUPPORTS LOST FAILED REMARKS/
NSTR//

B. DISSEMINATION SYSTEM DEGRADATIONS



STATUS START/STOP TOTAL REMARKS
LIST DEGRADATIONS OR NSTR//

C. BACK-UP SYSTEM STATUS

SYSTEM STATUS START/STOP TOTAL REMARKS
LIST STATUS OF ALL BACK-UP SYSTEMS

6. ANOMALIES/ANY ANOMALIES//

7. (S)(U)SSC [REDACTED]
(S)(U)SSC [REDACTED]
(S)(U)SSC [REDACTED]

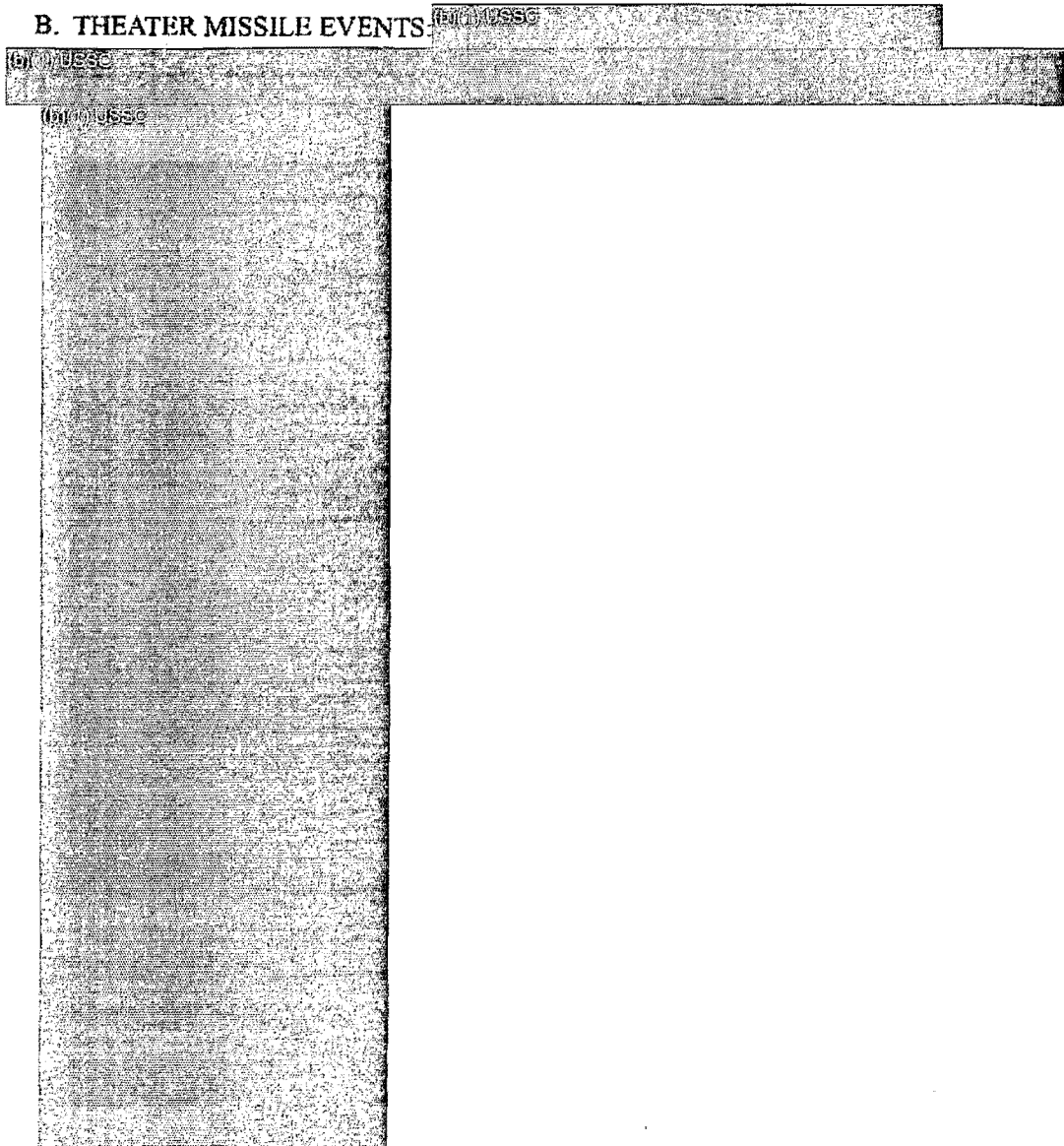
8. EVENTS/

A. STRATEGIC MISSILE EVENTS.

(S)(U)SSC [REDACTED]
(S)(U)SSC [REDACTED]
(S)(U)SSC [REDACTED]
(S)(U)SSC [REDACTED]



B. THEATER MISSILE EVENTS



C. UNCORRELATED SPACE OBJECTS. (S//NF) [REDACTED]

D. (S//NF) [REDACTED]

E. SLOWWALKER EVENTS. (S//NF) [REDACTED]

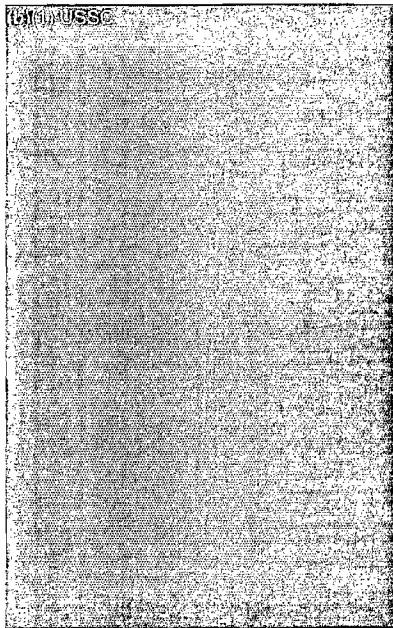
(S//NF) [REDACTED]

(S//NF) [REDACTED]

F. SPECIAL EVENTS (S//NF) [REDACTED]

(S//NF) [REDACTED]

(S//NF) [REDACTED]



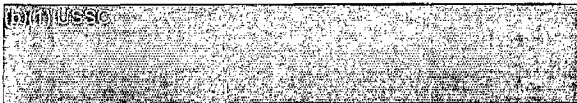
G. ANOMALOUS EVENTS.



H. POST EVENT ANALYSIS.

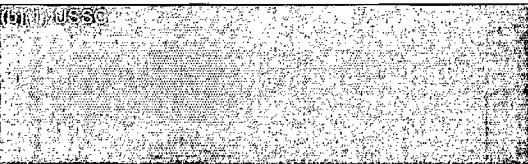


I.



9. WEATHER/ANY SIGNIFICANT WEATHER AFFECTING OPERATIONS//





GENTEXT/INTELLIGENCE/(U-FOUO)/INSERT INTELLIGENCE ISSUES OR NSTR//

GENTEXT/LOGISTICS/(U-FOUO)/INSERT INTELLIGENCE ISSUES OR NSTR//

GENTEXT/COMMUNICATIONS AND CONNECTIVITY/(U-FOUO)/CURRENT COMMUNICATIONS AND CONNECTIVITY ISSUES //

GENTEXT/PERSONNEL/(U-FOUO)/CURRENT PERSONNEL AND MANNING ISSUES /

GENTEXT/SIGNIFICANT POLITICAL MILITARY DIPLOMATIC EVENTS/(U-FOUO)/ANY SIGNIFICANT POLITICAL MILITARY DIPLOMATIC EVENTS//

GENTEXT/COMMANDERS EVALUATION/(U-FOUO)/ANY COMMENTS FROM THE COMMANDER//

RMKS/(U-FOUO) ANY ADDITIONAL REMARKS/

11

(b) (7) USISC

DECL/DECLASSIFICATION INSTRUCTIONS //

Attachment 3

SAMPLE EXERCISE SUPPORT REQUEST MESSAGE FORMAT (U)

FM

REQUESTOR:

TO

USSTRATCOM OFFUTT AFB NE//OP50//

NAVSECGRU DET WASHINGTON DC//70/72//

IBS SIMPLEX OPS MGR WASHINGTON DC//72/73//

HQ AIA KELLY AFB TX//DO/DOOS/DOP//

INCLUDE FOR CONUS EVENTS:

67OSS KELLY AFB TX//OSZ//

CDR USJFCOM NORFOLK VA//J33/J38/J2/J2P/J2T/J2NRO//

CDR USCJFCOM NORFOLK VA//IME//

CDR USSTRATCOM OFFUTT AFB NE//IME//

CDR USTRANSCOM SCOTT AFB IL//IME//

INCLUDE FOR USCENTCOM EVENTS:

4416ISP AL KHARJ SA//DOM//

CDR USCENTCOM INTEL MACDILL AFB FL//CCJ2/IME//

CDR USCENTCOM MACDILL AFB FL//CCJ3/ CCJ3-OO/CCJ3-OT

CJTF SWA//J2/J3//

INCLUDE FOR USEUCOM EVENTS:

HQ USEUCOM VAIHTINGEN GE//ECJ36/ECJ5T/ECJ6O/ECJ22/ECJ22-JC/ECJ23-EX//

JAC MOLESWORTH RAF MOLESWORTH UK//IME/DO/DOO/DOOW//

26IG RAMSTEIN AB GE//DOM)

INCLUDE FOR USPACOM EVENTS:

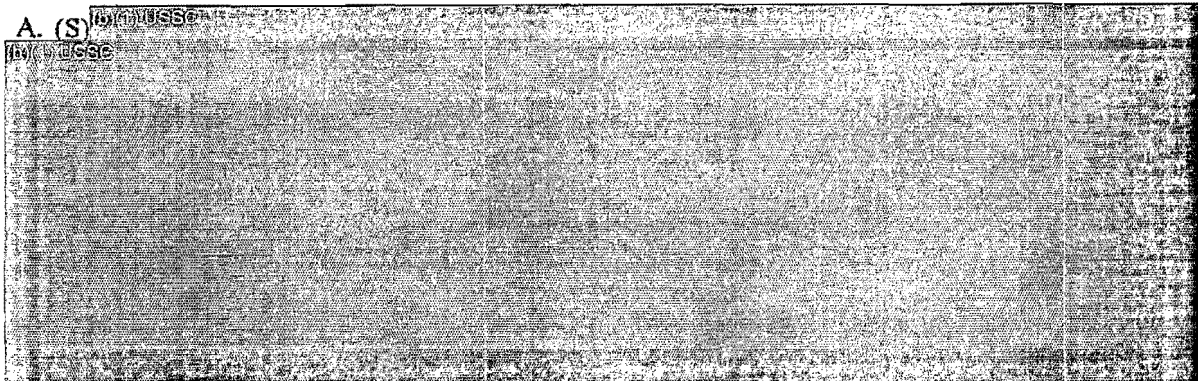
692ISS HICKAM AFB HI//DOO//
CDR USPACOM HONOLULU HI//J28/J31/J35/J37/J375/IME//
COMUSJAPAN COMMAND CENTER YOKOTA AB JA//J34//
COMUSKOREA SEOUL KOR//FKJ3-OP-AS/FKJ6-O/FKJ3-CC//

INCLUDE FOR USSOUTHCOM EVENTS:

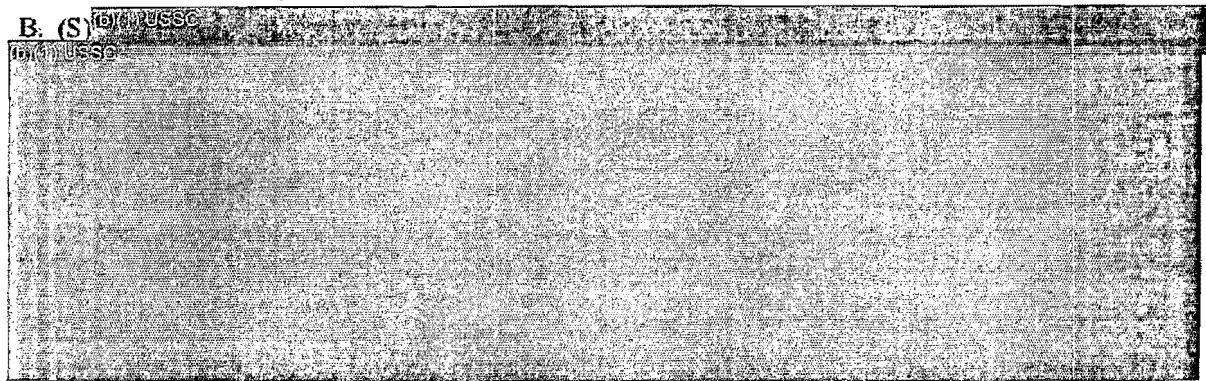
CDR USSOUTHCOM MIAMI FL//IME// .INFO
JOINT STAFF WASHINGTON DC//J38-DSOD/NOSD//
JOINT STAFF NAOC OFFUTT AFB NE//PLANS//
DIA WASHINGTON DC//CL-1//
CNO WASHINGTON DC//N632//
USSTRATCOM OFFUTT AFB NE//OP13/OP50//
CMOC CHEYENNE MOUNTAIN AS CO//J3/J30/J3OM/J3CM//
COMARSPACE COLORADO SPRINGS CO//SMDC-AR-ZA/SMDC-AR-OJ//
COMNAVSPACECOM DAHLGREN VA//N3/N31/N512//
NAVSPACECOM DET ECHO CHESAPEAKE VA
14AF VANDENBERG AFB CA//DO/DOX//
HQ AFSPC PETERSON AFB CO//DOTX//
DOD DET SAN ANTONIO TX//DO//
JTAGS DET CENT AS-SALIYAH QA//SMDC-AR-OJ-C//
JTAGS DET EUR VAHINGEN GE//SMDC-AR-OJ-E//
JTAGS DET PAC OSAN AB KOR//SMDC-AR-OJ-P//
OSO WASHINGTON DC//AMER/EUR/GLBL/NATL/PAC//
JNIC SCHRIEVER AFB CO//WSWE//
HQ SWC SCHRIEVER AFB CO//DO/DOO/DOXE/DOOS//
MSGID/GENADMIN/(ORIGINATOR)//
SUBJ/TES SUPPORT DURING EXERCISE (NAME) (U)//
SECRET/REL TO USA/CAN/GBR/X1/X3/X4
POC/NAME/RANK/PHONE NUMBER (DSN, COMMERCIAL)/E-MAIL ADDRESS (.MIL, .SMIL)//
REF//
AMPN//
RMKS

1. U) REQUEST TES EXERCISE SUPPORT DURING (ORGANIZATION) EXERCISE (NAME).
2. (ORIGINATOR CLASSIFY) ZULU CALENDAR DATES OF EXERCISE TBM LAUNCHES:
3. (ORIGINATOR CLASSIFY) AOR(S) IN WHICH EXERCISE TBM LAUNCHES AND IMPACTS WILL OCCUR:
4. U) BROADCAST MESSAGE FORMATS REQUIRED: IBS SIMPLEX SENSOREP/IBS INTERACTIVE TDIMF REDUCED/IBS INTERACTIVE TDIMF NON-REDUCED.
5. U) VOICE REPORTING NET(S) REQUIRING ACTIVATION: THEATER MISSILE EVENT CONFERENCE/CENTCOM FDFR/EUCOM FDFR/PACOM FDFR/PACOM-6 /OTHER/NONE
6. (ORIGINATOR CLASSIFY) SECTORS AT RISK DESCRIPTION (IF DIFFERENT FROM REAL WORLD):
7. (U) REPORTING SOURCE: MCS/JTAGS/TACDAR/MDSI
8. (ORIGINATOR CLASSIFY) SCRIPTED EVENTS. FOR EACH SCRIPTED EVENT, SELECT ONE OF THE FOLLOWING FORMATS. FOLLOW THE FORMATS EXACTLY. USE REAL WORLD COUNTRY NAMES. IF ACTUAL SCRIPT IS UNKNOWN AT TIME THIS MESSAGE NEEDS TO BE RELEASED, USE FORMAT DETAILED IN PARA. E BELOW.

A. (S) ~~(b) (7) USSC~~
~~(b) (7) USSC~~



B. (S) ~~(b) (7) USSC~~
~~(b) (7) USSC~~



C. (S) ~~(b) (7) USSC~~
~~(b) (7) USSC~~



(b) (U) [REDACTED]

(b) (U) [REDACTED]

(b) (U) [REDACTED]

(b) (U) [REDACTED]

(b) (U) [REDACTED]

(b) (U) [REDACTED]

D. (S) (b) (U) [REDACTED]

(b) (U) [REDACTED]

FOR EXAMPLE:

(b) (U) [REDACTED]

E. (b) (U) [REDACTED]

(b) (U) [REDACTED]

(b) (U) [REDACTED]

(b) (U) [REDACTED]

(b) (U) [REDACTED]

(b) (U) [REDACTED]

FOR EXAMPLE:

(b) (U) [REDACTED]

9. (U) OTHER PERTINENT INFORMATION OR REQUESTS: FOR EXAMPLE:

NON-STANDARD COMMUNICATION REQUIREMENTS SUCH AS SIPRNET; DATA COLLECTION REQUIREMENTS; USE OF IBS SIMPLEX R&D CHANNEL OR IBS INTERACTIVE EXERCISE CHANNEL; USE OF REMOTE JTACS DISPLAYS. IDENTIFY IF ALL GEOGRAPHIC CC COORDINATION HAS BEEN ACCOMPLISHED.

Attachment 4

SAMPLE EXERCISE SUPPORT AIG 232 MESSAGE FORMAT (U)

FM

HQ USSTRATCOM OFFUTT AFB NE//OP13//

TO

USSTRATCOM OFFUTT AFB NE//OP50//

NAVSECGRU DET WASHINGTON DC//70/72//

IBS SIMPLEX OPS MGR WASHINGTON DC//72/73//

HQ AIA KELLY AFB TX//DO/DOOS/DOP//

INCLUDE FOR CONUS EVENTS:

670SS KELLY AFB TX//OSZ//

USCINCFCOM NORFOLK VA//J33/J38/J2/J2P/J2T/J2NRO//

USCINCFCOM NORFOLK VA//IME//

USCINCSTRAT OFFUTT AFB NE//IME//

USCINCTRANS SCOTT AFB IL//IME//

INCLUDE FOR USCENTCOM EVENTS:

4416ISP AL KHARJ SA//DOMI//

USCINCCENT INTEL CEN MACDILL AFB FL//CCJ2//IME//

USCINCCENT MACDILL AFB FL//CCJ3//

CJTF SWA//J2/J3//

INCLUDE FOR USEUCOM EVENTS:

HQ USEUCOM VAIHINGEN GE//ECJ36/ECJ5T/ECJ6O/ECJ22/ECJ22-JC/ECJ23-FX//

JAC MOLESWORTH RAF MOLESWORTH UK//IME/DO/DOO/DOOW//

26IG RAMSTEIN AB GE//DOM)

INCLUDE FOR USPACOM EVENTS:

692ISS HICKAM AFB HI//DOO//
USCINCPAC HONOLULU HI//J28/J31/J35/J37/J375/IME//
COMUSJAPAN COMMAND CENTER YOKOTA AB JA//J34//
COMUSKOREA SEOUL KOR//FKJ3-OP-AS/FKJ6-O/FKJ3-CC//

INCLUDE FOR USSOUTHCOM EVENTS:

USCINCSO MIAMI FL//IME//

.INFO

JOINT STAFF WASHINGTON DC//J38-DSOD/NOSD//
JOINT STAFF NAOC OFFUTT AFB NE//PLANS//
DIA WASHINGTON DC//CL-1//
CNO WASHINGTON DC//N632//
HQ USSTRATCOM OFFUTT AFB NE//OP13/OP50/CL19//
CMOC CHEYENNE MOUNTAIN AS CO//J3/J30/J30M/J3CM//
COMARSPACE COLORADO SPRINGS CO//SMDC-AR-ZA/SMDC-AR-OJ//
COMNAVSPACECOM DAHLGREN VA//N3/N31/N512//
NAVSPACECOM DET ECHO CHESAPEAKE VA
14AF VANDENBERG AFB CA//DO/DOX//
HQ AFSPC PETERSON AFB CO//DOTX//
21 SW PETERSON AFB CO//WOC//
DOD DET SAN ANTONIO TX//DO//
JTAGS DET EUR VAIHINGEN GE//SMDC-AR-OJ-E//
JTAGS DET PAC OSAN AB KOR//SMDC-AR-OJ-P/
2 SWS BUCKLEY AFB CO//CC/DO//
OSO WASHINGTON DC//AMER/EUR/GLBL/NATL/PAC//
JNIC SCHRIEVER AFB CO//WSWE//
HQ SWC SCHRIEVER AFB CO//DO/DOO/DOXE/DOOS//
MSGID/GENADMIN/HQ USSTRATCOM OFFUTT AFB NE//OP33//
SUBJ/TES SUPPORT DURING EXERCISE *NAME* (U)//
SECRET/REL TO USA/CAN/GBR/X1/X3/X4
POC/NAME/RANK/PHONE NUMBER (DSN, COMMERCIAL)/E-MAIL ADDRESS (.MIL, .SMIL)//

SD 523-2 3 MAY 2004

55

REF//REQUESTOR MESSAGE //

AMPN//MESSAGE DTG//

RMKS/

1. (U) THIS MSG IS OF INTEREST TO ALL TRE, AF TRS, MATT, SUCCESS AND CTT USERS, INDIRECT IBS SIMPLEX BROADCAST SUBSCRIBERS, AND IBS INTERACTIVE.

SUBSCRIBERS. REQUEST ASPO FAIRFAX REDRESS THIS MESSAGE TO DAG SIXAR AND AIG 11639. REQUEST ESC HANSCOM REDRESS THIS MESSAGE TO AIG 12842. IBS SIMPLEX /IBS INTERACTIVE BROADCAST SUBSCRIBERS NOT AN ADDRESSEE OF

AIG 232, AIG 8577, AIG 11639, AIG 12842, AND DAG SIXAR SHOULD BE ADVISED OF BELOW INFORMATION VIA ESTABLISHED MECHANISMS FROM COGNIZANT HDQTRS.

2. (ORIGINATOR CLASSIFY) EXERCISE DESCRIPTION. THIS MESSAGE

ANNOUNCES THEATER EVENT SYSTEM (TES) SUPPORT FOR "EXERCISE NAME". PER REFERENCE A, A SCRIPTED SCENARIO FOR SHORT AND MEDIUM/INTERMEDIATE RANGE TACTICAL BALLISTIC MISSILES WILL

BE PROVIDED BY MISSION CONTROL STATION (MCS) AND JOINT TACTICAL GROUND STATION (JTGS) UNITS VIA THE IBS SIMPLEX AND IBS INTERACTIVE DATA NETWORKS AND FIRST DETECT-FIRST REPORT VOICE NETWORKS.

3. (U) DATA DISSEMINATION METHODS FOR ALL THEATERS.

A. (U) IBS SIMPLEX. SENSOREP FORMAT. THE SCENARIO REPORTS WILL BE FLAGGED "EXER" AND REQUIRE TRE EQUIPMENT BE PROPERLY PROGRAMMED IF THE SCENARIO IS TO BE RECEIVED. TO AVOID RECEIVING EXERCISE DATA, IBS SIMPLEX BROADCAST SUBSCRIBERS SHOULD SELECT "REAL" WHEN LOGGING ONTO TRE, CONSTANT SOURCE RADIO, OR SUCCESS RADIO EQUIPMENT.

AND/OR

B. (U) IBS INTERACTIVE. TDIMF FORMAT. IBS INTERACTIVE REPORTS WILL BE LABELED "TEST" AND "EXERCISE" LAW NORMAL IBS INTERACTIVE PROTOCOL. INITIAL AND UPDATE REPORTS WILL BE PROVIDED IN TIME SEQUENCE USING THE SAME MESSAGE NUMBER. MESSAGES WILL BE FORMATTED USING THE SYMBOL IDENTIFIERS FOUND ON PAGES 25-30 OF THE IBS INTERACTIVE PRODUCER'S GUIDE DATED APRIL 96. IBS INTERACTIVE ID CODES ARE IDENTIFIED IN A SEPARATE MESSAGE FROM AIA.

4. (b)(1)USSC
(b)(1)USSC

5. (b)(1)USSC
(b)(1)USSC

6. (ORIGINATOR CLASSIFY) SCRIPTED EVENTS: AS REQUESTED

7. (U) TERMINATION INSTRUCTIONS/CRITIQUES: IF TERMINATION OF EXERCISE REQUIRED, NOTIFY THE SPOC WATCH OFFICER/NCO, DSN 692-6000. THE SPOC WILL NOTIFY 14AF, ARSPACE AND MWC. SUBMIT CRITIQUES OF THE EXERCISE TO USSTRATCOM/OP33. DSN AND EMAIL ADDRESSES PROVIDED IN HEADER.

DERIVED FROM: CENTCOM/EUCOM/PACOM SOURCES
DECL/DDMMYY//

Attachment 5

CATEGORIZED MISSILE THREATS (U)

Table A5.1. (S//REL) Categorized Missile Threats. (U)

(S//REL) (U)

Attachment 6

TIER 1 FDFR NODES (U)

Table A6.1. (U) Tier 1 FDFR Nodes. (U)

USPACOM	USEUCOM	USCENTCOM
CC Seoul	USEUCOM	Damper Romeo
Osan (7AF)	USAFE	Shadow
USFJ	USAREUR	Lightning Rod
ANR (Alaska NORAD Region)	USNAVEUR	Lucky
Pacific (USPACOM)		Ram Rod
JTF 519 (if manned)		Dragon
JAOC (PACAF Joint Air Ops Center) (if manned)		Orion

Attachment 7

DISTRIBUTION LIST (U)

Table A7.1. (U) Distribution List. (U)

UNIT	COPIES
USSTRATCOM/OP114	2
Joint National Integration Center (JNIC) EX	2
Naval Surface Warfare Center (A24)	1
HQ USEUCOM/ECJ36	1
Space Warfare Center (SWC)/XIE	1
Alpha Det, Joint Tactical Ground Station (JTAGS) Europe	1
Bravo Det, 2nd Space Co, JTAGS Europe	1
G3, 1st Space Brigade ARSTRAT G3 Operations	1
CMOC/J3M	1
HQ USEUCOM/ECJ36	1
OL-D, HQ AFSPC/DRFS	1
AFSPC/XOSM	1
USSTRATCOM LNO, CENTCOM FWD HQ	1
USPACOM/ J362	10
USSOUTHCOM/J33	1
AUAB CAOC Space Cell	1
TOTAL	27

This page left intentionally blank.

This page left intentionally blank.

B. SITE OPSCAP DEGRADATIONS

SITE STATUS START/STOP TOTAL REMARKS
LIST DEGRADATIONS OR NSTR //

C.

(b)(1) USSC [REDACTED]

SYSTEM STATUS START/STOP TOTAL REMARKS
LIST DEGRADATIONS OR NSTR //

D. AOI OPSCAP DEGRADATIONS

AOI STATUS START/STOP TOTAL REMARKS
LIST DEGRADATIONS OR NSTR//

E. SYSCAP

SYSCAP STATUS START/STOP TOTAL REMARKS
LIST DEGRADATIONS OR NSTR//

4. SPACE SEGMENT/

A. SENSOR OPSCAP DEGRADATIONS

(b)(1) USSC [REDACTED]

STATUS START/STOP TOTAL REMARKS
LIST DEGRADATIONS OR NSTR//

5. GROUND SEGMENT/

A. CONTACT SUMMARY/

PROGRAM TOTAL SUPPORTS LOST FAILED REMARKS/
NSTR//

B. DISSEMINATION SYSTEM DEGRADATIONS

(b)(1) USSC [REDACTED]

STATUS START/STOP TOTAL REMARKS
LIST DEGRADATIONS OR NSTR//

C. BACK-UP SYSTEM STATUS

SYSTEM STATUS START/STOP TOTAL REMARKS
LIST STATUS OF ALL BACK-UP SYSTEMS

6. ANOMALIES/ANY ANOMALIES//

7. (b)(1) USSC [REDACTED]
(b)(1) USSC [REDACTED]
(b)(1) USSC [REDACTED]

8. EVENTS/

A. STRATEGIC MISSILE EVENTS. (b)(1) USSC [REDACTED]
(b)(1) USSC [REDACTED]
(b)(1) USSC [REDACTED]
(b)(1) USSC [REDACTED]

(b)(1) USSC

A large rectangular area of the document is completely redacted with a solid black box.

B. THEATER MISSILE EVENTS:

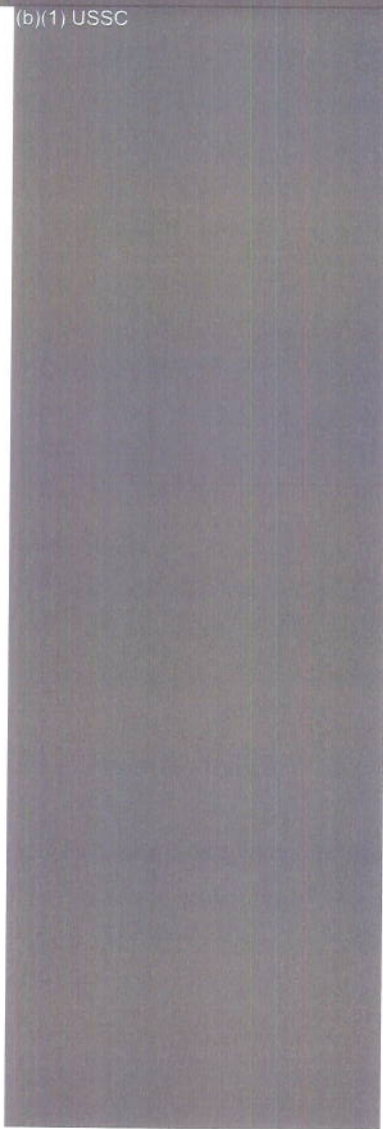
(b)(1) USSC

A horizontal rectangular area of the document is redacted with a solid black box.

(b)(1) USSC

A horizontal rectangular area of the document is redacted with a solid black box.

(b)(1) USSC

A large vertical rectangular area of the document is completely redacted with a solid black box.

C. UNCORRELATED SPACE OBJECTS. (b)(1) USSC

D. (b)(1) USSC

E. SLOWWALKER EVENTS. (b)(1) USSC

(b)(1) USSC

(b)(1) USSC

F. SPECIAL EVENTS (b)(1) USSC

(b)(1) USSC

(b)(1) USSC

(b)(1) USSC
[Redacted]

G. ANOMALOUS EVENTS.

(b)(1) USSC
[Redacted]

H. POST EVENT ANALYSIS.

(b)(1) USSC
[Redacted]

(b)(1) USSC
[Redacted]

(b)(1) USSC
[Redacted]

I.

(b)(1) USSC
[Redacted]

9. WEATHER/ANY SIGNIFICANT WEATHER AFFECTING OPERATIONS//

10. (b)(1) USSC
[Redacted]

(b)(1) USSC
[Redacted]

GENTEXT/INTELLIGENCE/(U-FOUO)/INSERT INTELLIGENCE ISSUES OR NSTR//

GENTEXT/LOGISTICS/(U-FOUO)/INSERT INTELLIGENCE ISSUES OR NSTR//

GENTEXT/COMMUNICATIONS AND CONNECTIVITY/(U-FOUO)/CURRENT COMMUNICATIONS AND CONNECTIVITY ISSUES //

GENTEXT/PERSONNEL/(U-FOUO)/CURRENT PERSONNEL AND MANNING ISSUES /

GENTEXT/SIGNIFICANT POLITICAL MILITARY DIPLOMATIC EVENTS/(U-FOUO)/ANY SIGNIFICANT POLITICAL MILITARY DIPLOMATIC EVENTS//

GENTEXT/COMMANDERS EVALUATION/(U-FOUO)/ANY COMMENTS FROM THE COMMANDER//

RMKS/(U-FOUO) ANY ADDITIONAL REMARKS/

11. (b)(1) USSC

DECL/DECLASSIFICATION INSTRUCTIONS //

Attachment 3

SAMPLE EXERCISE SUPPORT REQUEST MESSAGE FORMAT (U)

FM

REQUESTOR:

TO

USSTRATCOM OFFUTT AFB NE//OP50//

NAVSECGRU DET WASHINGTON DC//70/72//

IBS SIMPLEX OPS MGR WASHINGTON DC//72/73//

HQ AIA KELLY AFB TX//DO/DOOS/DOP//

INCLUDE FOR CONUS EVENTS:

67OSS KELLY AFB TX//OSZ//

CDR USJFCOM NORFOLK VA//J33/J38/J2/J2P/J2T/J2NRO//

CDR USCJFCOM NORFOLK VA//IME//

CDR USSTRATCOM OFFUTT AFB NE//IME//

CDR USTRANSCOM SCOTT AFB IL//IME//

INCLUDE FOR USCENTCOM EVENTS:

4416ISP AL KHARJ SA//DOMI//

CDR USCENTCOM INTEL MACDILL AFB FL//CCJ2/IME//

CDR USCENTCOM MACDILL AFB FL//CCJ3/ CCJ3-OO/CCJ3-OT

CJTF SWA//J2/J3//

INCLUDE FOR USEUCOM EVENTS:

HQ USEUCOM VAIHINGEN GE//ECJ36/ECJ5T/ECJ6O/ECJ22/ECJ22-JC/ECJ23-EX//

JAC MOLESWORTH RAF MOLESWORTH UK//IME/DO/DOO/DOOW//

26IG RAMSTEIN AB GE//DOM)

INCLUDE FOR USPACOM EVENTS:

692ISS HICKAM AFB HI//DOO//

CDR USPACOM HONOLULU HI//J28/J31/J35/J37/J375/IME//

COMUSJAPAN COMMAND CENTER YOKOTA AB JA//J34//

COMUSKOREA SEOUL KOR//FKJ3-OP-AS/FKJ6-O/FKJ3-CC//

INCLUDE FOR USSOUTHCOM EVENTS:

CDR USSOUTHCOM MIAMI FL//IME// .INFO

JOINT STAFF WASHINGTON DC//J38-DSOD/NOSD//

JOINT STAFF NAOC OFFUTT AFB NE//PLANS//

DIA WASHINGTON DC//CL-1//

CNO WASHINGTON DC//N632//

USSTRATCOM OFFUTT AFB NE//OP13/OP50//

CMOC CHEYENNE MOUNTAIN AS CO//J3/J30/J3OM/J3CM//

COMARSPACE COLORADO SPRINGS CO//SMDC-AR-ZA/SMDC-AR-OJ//

COMNAVSPACECOM DAHLGREN VA//N3/N31/N512//

NAVSPACECOM DET ECHO CHESAPEAKE VA

14AF VANDENBERG AFB CA//DO/DOX//

HQ AFSPC PETERSON AFB CO//DOTX//

DOD DET SAN ANTONIO TX//DO//

JTAGS DET CENT AS-SALIYAH QA//SMDC-AR-OJ-C//

JTAGS DET EUR VAIHINGEN GE//SMDC-AR-OJ-E//

JTAGS DET PAC OSAN AB KOR//SMDC-AR-OJ-P//

OSO WASHINGTON DC//AMER/EUR/GLBL/NATL/PAC//

JNIC SCHRIEVER AFB CO//WSWE//

HQ SWC SCHRIEVER AFB CO//DO/DOO/DOXE/DOOS//

MSGID/GENADMIN/(ORIGINATOR)//

SUBJ/TES SUPPORT DURING EXERCISE (NAME) (U)//

SECRET/REL TO USA/CAN/GBR/X1/X3/X4

POC/NAME/RANK/PHONE NUMBER (DSN, COMMERCIAL)/E-MAIL ADDRESS (.MIL, .SMIL)//

REF//

AMPN//

RMKS

1. U) REQUEST TES EXERCISE SUPPORT DURING (ORGANIZATION) EXERCISE (NAME).
2. (ORIGINATOR CLASSIFY) ZULU CALENDAR DATES OF EXERCISE TBM LAUNCHES:
3. (ORIGINATOR CLASSIFY) AOR(S) IN WHICH EXERCISE TBM LAUNCHES AND IMPACTS WILL OCCUR:
4. U) BROADCAST MESSAGE FORMATS REQUIRED: IBS SIMPLEX SENSOREP/IBS INTERACTIVE TDIMF REDUCED/IBS INTERACTIVE TDIMF NON-REDUCED.
5. U) VOICE REPORTING NET(S) REQUIRING ACTIVATION: THEATER MISSILE EVENT CONFERENCE/CENTCOM FDFR/EUCOM FDFR/PACOM FDFR/PACOM-6 /OTHER/NONE
6. (ORIGINATOR CLASSIFY) SECTORS AT RISK DESCRIPTION (IF DIFFERENT FROM REAL WORLD):
7. (U) REPORTING SOURCE: MCS/JTAGS/TACDAR/MDST
8. (ORIGINATOR CLASSIFY) SCRIPTED EVENTS. FOR EACH SCRIPTED EVENT, SELECT ONE OF THE FOLLOWING FORMATS. FOLLOW THE FORMATS EXACTLY. USE REAL WORLD COUNTRY NAMES. IF ACTUAL SCRIPT IS UNKNOWN AT TIME THIS MESSAGE NEEDS TO BE RELEASED, USE FORMAT DETAILED IN PARA. E BELOW.

A. (S) (b)(1) USSC
(b)(1) USSC



B. (S) (b)(1) USSC
(b)(1) USSC



C. (S) (b)(1) USSC
(b)(1) USSC



(b)(1) USSC [REDACTED]

(b)(1) USSC [REDACTED]
(b)(1) USSC [REDACTED]
(b)(1) USSC [REDACTED]
(b)(1) USSC [REDACTED]
(b)(1) USSC [REDACTED]
(b)(1) USSC [REDACTED]

D. (S) (b)(1) USSC [REDACTED]
(b)(1) USSC [REDACTED]

FOR EXAMPLE:

(b)(1) USSC [REDACTED]

E. (b)(1) USSC [REDACTED]
(b)(1) USSC [REDACTED]
(b)(1) USSC [REDACTED]
(b)(1) USSC [REDACTED]
(b)(1) USSC [REDACTED]
(b)(1) USSC [REDACTED]

FOR EXAMPLE:

(b)(1) USSC [REDACTED]

9. (U) OTHER PERTINENT INFORMATION OR REQUESTS: FOR EXAMPLE:
NON-STANDARD COMMUNICATION REQUIREMENTS SUCH AS SIPRNET; DATA COLLEC-
TION REQUIREMENTS; USE OF IBS SIMPLEX R&D CHANNELL OR IBS INTERACTIVE EXER-
CISE CHANNEL; USE OF REMOTE JTAGS DISPLAYS. IDENTIFY IF ALL GEOGRAPHIC CC
COORDINATION HAS BEEN ACCOMPLISHED.

Attachment 4

SAMPLE EXERCISE SUPPORT AIG 232 MESSAGE FORMAT (U)

FM

HQ USSTRATCOM OFFUTT AFB NE//OP13//

TO

USSTRATCOM OFFUTT AFB NE//OP50//

NAVSECGRU DET WASHINGTON DC//70/72//

IBS SIMPLEX OPS MGR WASHINGTON DC//72/73//

HQ AIA KELLY AFB TX//DO/DOOS/DOP//

INCLUDE FOR CONUS EVENTS:

670SS KELLY AFB TX//OSZ//

USCINCFJCOM NORFOLK VA//J33/J38/J2/J2P/J2T/J2NRO//

USCINCFJCOM NORFOLK VA//IME//

USCINCSTRAT OFFUTT AFB NE//IME//

USCINCTRANS SCOTT AFB IL//IME//

INCLUDE FOR USCENCOM EVENTS:

4416ISP AL KHARJ SA//DOMI//

USCINCCENT INTEL CEN MACDILL AFB FL//CCJ2/IME//

USCINCCENT MACDILL AFB FL//CCJ3//

CJTF SWA//J2/J3//

INCLUDE FOR USEUCOM EVENTS:

HQ USEUCOM VAIHINGEN GE//ECJ36/ECJ5T/ECJ6O/ECJ22/ECJ22-JC/ECJ23-FX//

JAC MOLESWORTH RAF MOLESWORTH UK//IME/DO/DOO/DOOW//

261G RAMSTEIN AB GE//DOM)

INCLUDE FOR USPACOM EVENTS:

692ISS HICKAM AFB HI//DOO//

USCINCPAC HONOLULU HI//J28/J31/J35/J37/J375/IME//

COMUSJAPAN COMMAND CENTER YOKOTA AB JA//J34//

COMUSKOREA SEOUL KOR//FKJ3-OP-AS/FKJ6-O/FKJ3-CC//

INCLUDE FOR USSOUTHCOM EVENTS:

USCINCSO MIAMI FL//IME//

.INFO

JOINT STAFF WASHINGTON DC//J38-DSOD/NOSD//

JOINT STAFF NAOC OFFUTT AFB NE//PLANS//

DIA WASHINGTON DC//CL-1//

CNO WASHINGTON DC//N632//

HQ USSTRATCOM OFFUTT AFB NE//OP13/OP50/CL19//

CMOC CHEYENNE MOUNTAIN AS CO//J3/J30/J30M/J3CM//

COMARSPACE COLORADO SPRINGS CO//SMDC-AR-ZA/SMDC-AR-OJ//

COMNAVSPACECOM DAHLGREN VA//N3/N31/N512//

NAVSPACECOM DET ECHO CHESAPEAKE VA

14AF VANDENBERG AFB CA//DO/DOX//

HQ AFSPC PETERSON AFB CO//DOTX//

21 SW PETERSON AFB CO//WOC//

DOD DET SAN ANTONIO TX//DO//

JTAGS DET EUR VAIHINGEN GE//SMDC-AR-OJ-E//

JTAGS DET PAC OSAN AB KOR//SMDC-AR-OJ-P/

2 SWS BUCKLEY AFB CO//CC/DO//

OSO WASHINGTON DC//AMER/EUR/GLBL/NATL/PAC//

JNIC SCHRIEVER AFB CO//WSWE//

HQ SWC SCHRIEVER AFB CO//DO/DOO/DOXE/DOOS//

MSGID/GENADMIN/HQ USSTRATCOM OFFUTT AFB NE//OP33//

SUBJ/TES SUPPORT DURING EXERCISE *NAME* (U)//

SECRET/REL TO USA/CAN/GBR/X1/X3/X4

POC/NAME/RANK/PHONE NUMBER (DSN, COMMERCIAL)/E-MAIL ADDRESS (.MIL, .SMIL)//

SD 523-2 3 MAY 2004

55

REF//REQUESTOR MESSAGE //

AMPN//MESSAGE DTG//

RMKS/

1. (U) THIS MSG IS OF INTEREST TO ALL TRE, AF TRS, MATT, SUCCESS AND CTT USERS, INDIRECT IBS SIMPLEX BROADCAST SUBSCRIBERS, AND IBS INTERACTIVE.

SUBSCRIBERS. REQUEST ASPO FAIRFAX REDRESS THIS MESSAGE TO DAG SIXAR AND AIG 11639. REQUEST ESC HANSCOM REDRESS THIS MESSAGE TO AIG 12842. IBS SIMPLEX /IBS INTERACTIVE BROADCAST SUBSCRIBERS NOT AN ADDRESSEE OF

AIG 232, AIG 8577, AIG 11639, AIG 12842, AND DAG SIXAR SHOULD BE ADVISED OF BELOW INFORMATION VIA ESTABLISHED MECHANISMS FROM COGNIZANT HDQTRS.

2. (ORIGINATOR CLASSIFY) EXERCISE DESCRIPTION. THIS MESSAGE ANNOUNCES THEATER EVENT SYSTEM (TES) SUPPORT FOR "EXERCISE NAME". PER REFERENCE A, A SCRIPTED SCENARIO FOR SHORT AND MEDIUM/INTERMEDIATE RANGE TACTICAL BALLISTIC MISSILES WILL

BE PROVIDED BY MISSION CONTROL STATION (MCS) AND JOINT TACTICAL GROUND STATION (JTGS) UNITS VIA THE IBS SIMPLEX AND IBS INTERACTIVE DATA NETWORKS AND FIRST DETECT-FIRST REPORT VOICE NETWORKS.

3. (U) DATA DISSEMINATION METHODS FOR ALL THEATERS.

A. (U) IBS SIMPLEX. SENSOREP FORMAT. THE SCENARIO REPORTS WILL BE FLAGGED "EXER" AND REQUIRE TRE EQUIPMENT BE PROPERLY PROGRAMMED IF THE SCENARIO IS TO BE RECEIVED. TO AVOID RECEIVING EXERCISE DATA, IBS SIMPLEX BROADCAST SUBSCRIBERS SHOULD SELECT "REAL" WHEN LOGGING ONTO TRE, CONSTANT SOURCE RADIO, OR SUCCESS RADIO EQUIPMENT.

AND/OR

B. (U) IBS INTERACTIVE. TDIMF FORMAT. IBS INTERACTIVE REPORTS WILL BE LABELED "TEST" AND "EXERCISE" IAW NORMAL IBS INTERACTIVE PROTOCOL. INITIAL AND UPDATE REPORTS WILL BE PROVIDED IN TIME SEQUENCE USING THE SAME MESSAGE NUMBER. MESSAGES WILL BE FORMATTED USING THE SYMBOL IDENTIFIERS FOUND ON PAGES 25-30 OF THE IBS INTERACTIVE PRODUCER'S GUIDE DATED APRIL 96. IBS INTERACTIVE ID CODES ARE IDENTIFIED IN A SEPARATE MESSAGE FROM AIA.

4. (b)(1) USSC [REDACTED]
(b)(1) USSC [REDACTED]

5. (b)(1) USSC [REDACTED]
(b)(1) USSC [REDACTED]

6. (ORIGINATOR CLASSIFY) SCRIPTED EVENTS: AS REQUESTED

7. (U) TERMINATION INSTRUCTIONS/CRITIQUES: IF TERMINATION OF EXERCISE REQUIRED, NOTIFY THE SPOC WATCH OFFICER/NCO, DSN 692-6000. THE SPOC WILL NOTIFY 14AF, ARSPACE AND MWC. SUBMIT CRITIQUES OF THE EXERCISE TO USSTRATCOM/OP33. DSN AND EMAIL ADDRESSES PROVIDED IN HEADER.

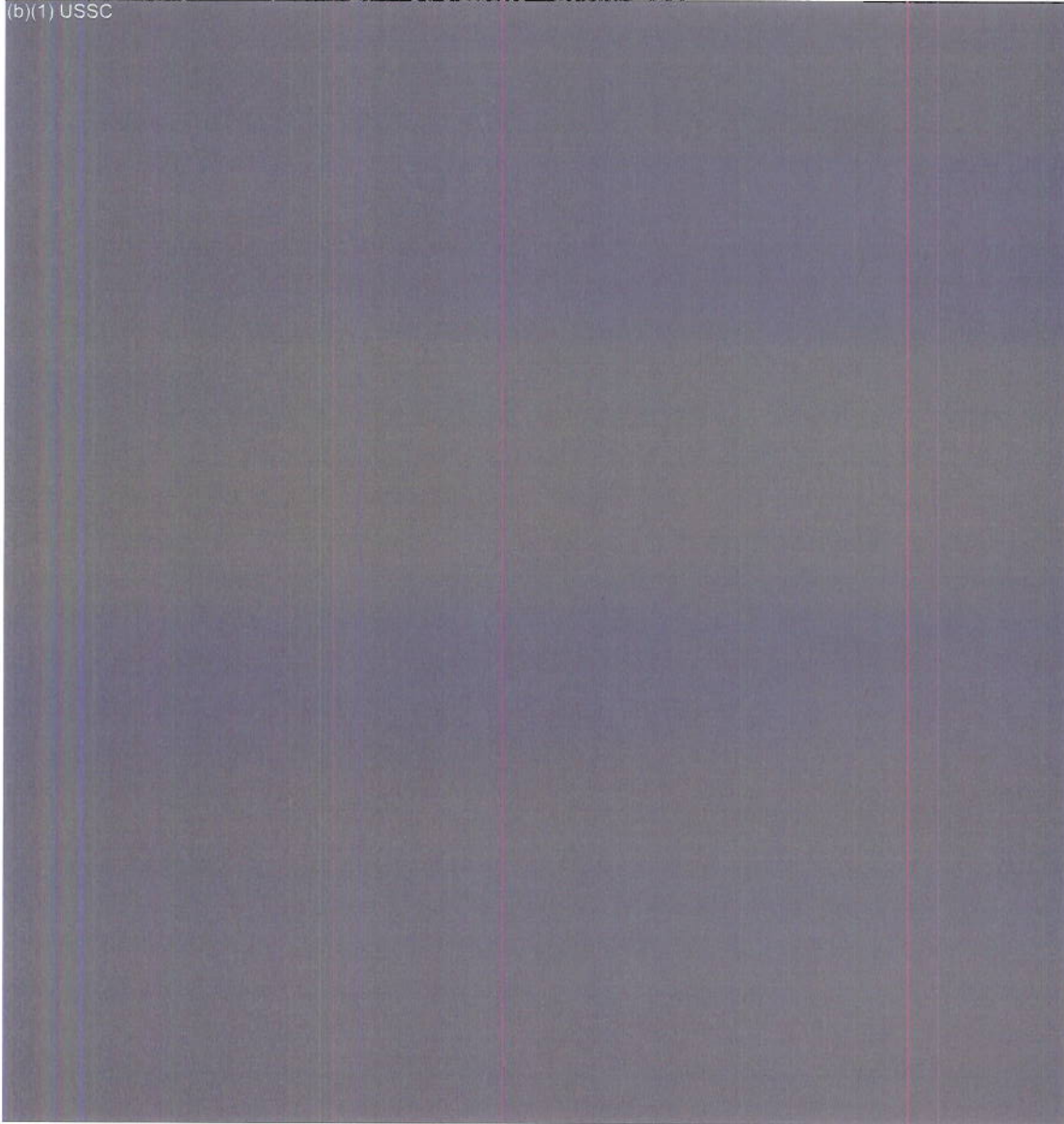
DERIVED FROM: CENTCOM/EUCOM/PACOM SOURCES
DECL/DDMMYY//

Attachment 5

CATEGORIZED MISSILE THREATS (U)

Table A5.1. (S/REL) Categorized Missile Threats. (U)

(b)(1) USSC



Attachment 6

TIER 1 FDFR NODES (U)

Table A6.1. (U) Tier 1 FDFR Nodes. (U)

USPACOM	USEUCOM	USCENTCOM
CC Seoul	USEUCOM	Damper Romeo
Osan (7AF)	USAFE	Shadow
USFJ	USAREUR	Lightning Rod
ANR (Alaska NORAD Region)	USNAVEUR	Lucky
Pacific (USPACOM)		Ram Rod
JTF 519 (if manned)		Dragon
JAOC (PACAF Joint Air Ops Center) (if manned)		Orion

Attachment 7

DISTRIBUTION LIST (U)

Table A7.1. (U) Distribution List. (U)

UNIT	COPIES
USSTRATCOM/OP114	2
Joint National Integration Center (JNIC) EX	2
Naval Surface Warfare Center (A24)	1
HQ USEUCOM/ECJ36	1
Space Warfare Center (SWC)/XIE	1
Alpha Det, Joint Tactical Ground Station (JTAGS) Europe	1
Bravo Det, 2nd Space Co, JTAGS Europe	1
G3, 1st Space Brigade ARSTRAT G3 Operations	1
CMOC/J3M	1
HQ USEUCOM/ECJ36	1
OL-D, HQ AFSPC/DRFS	1
AFSPC/XOSM	1
USSTRATCOM I.NO, CENTCOM FWD HQ	1
USPACOM/ J362	10
USSOUTHCOM/J33	1
AUAB CAOC Space Cell	1
TOTAL	27

This page left intentionally blank.

This page left intentionally blank.